

MOTOROLA

Service Manual

AUTO RADIO

MODEL
VWA7

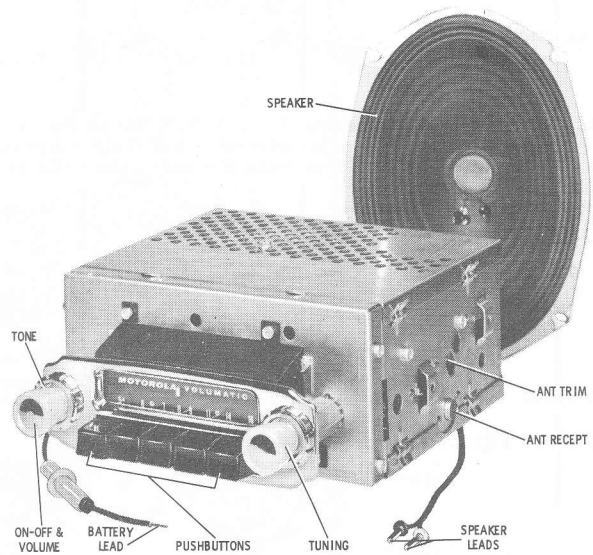
GENERAL INFORMATION

TYPE - Automotive type superheterodyne receiver designed for custom installation in the 1957, 1956, 1955, 1954 & 1953 Volkswagen cars.

TUNING RANGE - 535 to 1605 Kc IF - 262.5 Kc

OPERATES FROM - 6 volt storage battery

TUBE COMPLEMENT -	6BE6	Converter
	6BA6	IF amp
	6CR6	Det-AVC-AF amp
	6AQ5	Pwr amp
	6X4	Rectifier



TO SET PUSHBUTTONS

This receiver has an automatic tuner, with 5 pushbuttons for automatic station selection.

To set the pushbuttons for automatic tuning, proceed as follows:

1. Tune in the desired station with the manual tuning knob. Tune carefully until you are exactly on the station.

2. Pull out the first pushbutton to be set, to unlock the button for station set-up, and then push button in firmly to set and lock the button.

3. Follow the above procedure for the remaining four buttons.

MOTOROLA AUTO RADIO WARRANTY SERVICE STATION PROCEDURE FOR BRANDED MODELS

1. The definition of a Motorola Branded Model is one that is branded with the Motorola name, and distributed to dealers through authorized Motorola Distributors.

2. Before performing a warranty repair on a Motorola Branded Auto Radio, you must first receive from the customer the Customer's Warranty Policy. This policy must be filled out by the selling dealer at the time of retail purchase. The Customer's Warranty Policy must show the radio to be within the ninety day warranty period if the repair is to be handled under the Motorola Auto Radio Warranty Plan.

3. The removal or reinstallation of the radio, the elimination of motor noise, tire static, electrical interference, or faulty installation and aerial repairs are not considered as warranty repairs. Consequently, charges for these services are to be borne by the customer.

4. Fill in the Motorola Auto Radio Warranty Labor Claim, Part No. 54P480884, and mail White and Green copies to the Motorola Distributor serving your area. The Yellow copy is to be retained by the Warranty Service Station for his files.

5. Defective parts for warranty repairs made on Motorola Branded Auto Radios are to be sent to your Motorola Distributor for free replacement, supported with the defective parts return form which you are now using.

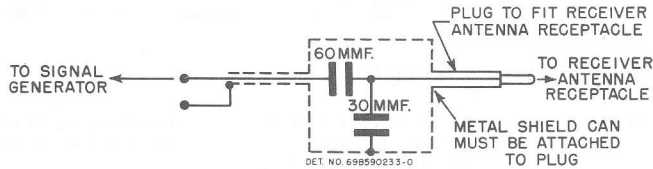
6. Only those service shops authorized by their Motorola Distributor can perform repairs within the warranty period on a no-charge basis to the customer. If you are not already authorized as a Motorola Auto Radio Warranty Service Station, and you are interested in handling this service, please contact your Motorola Distributor for complete details.

MOTOROLA INC. 4545 WEST AUGUSTA BLVD. · CHICAGO 51, ILLINOIS

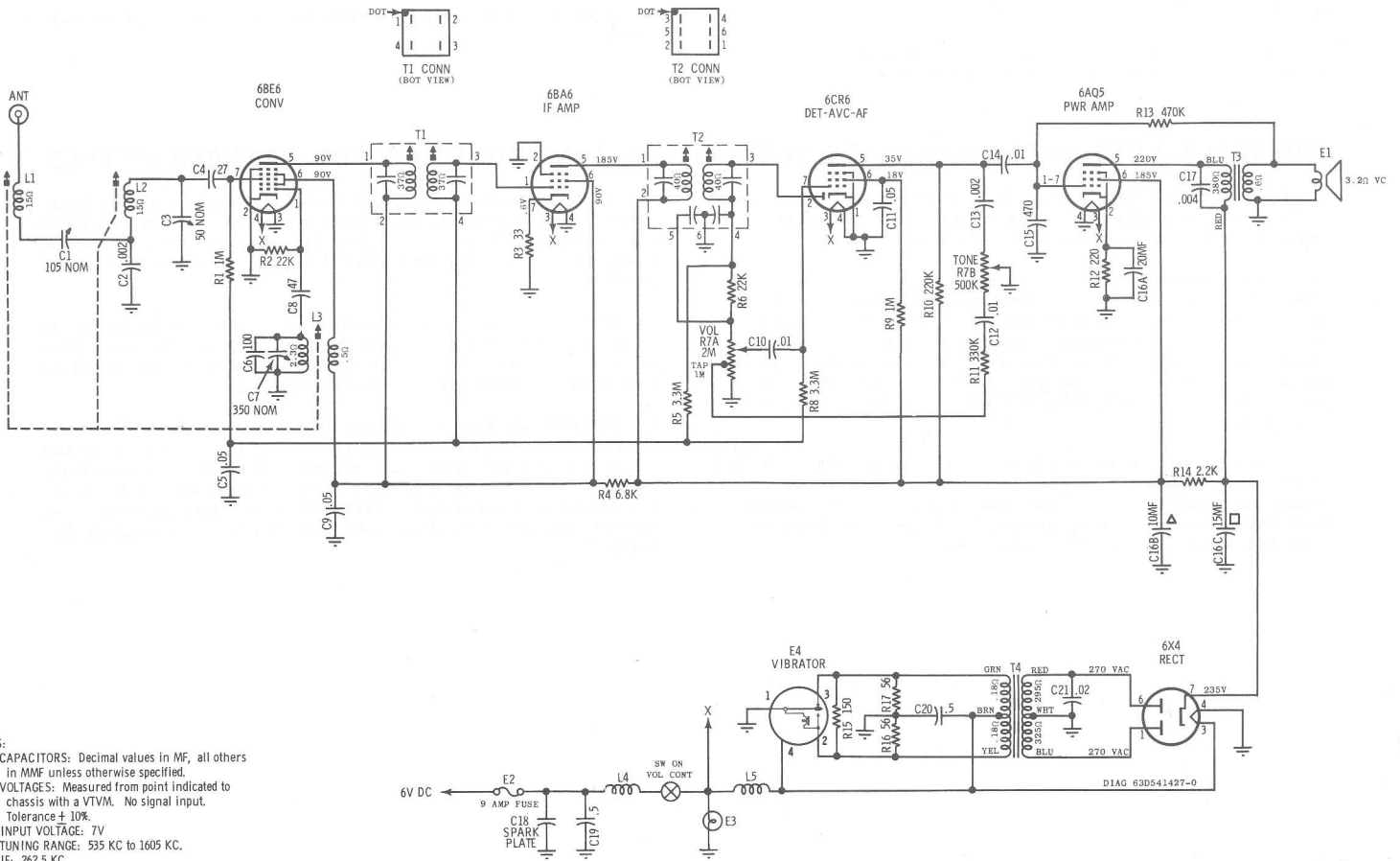
ALIGNMENT

Connect an output meter across the speaker voice coil. Set volume to maximum and tone to treble. Attenuate the signal generator output to maintain 1.79 volts on output meter at all times to prevent overloading the receiver.

STEP	GENERATOR CONNECTION	GENERATOR FREQUENCY (400 cycle mod)	TUNER SET TO	ADJUST	REMARKS
IF ALIGNMENT					
1.	Ant recept through .1 mf & chassis	262.5 Kc	Hi end stop	1, 2, 3 & 4	Adjust for maximum.
RF ALIGNMENT					
2.	Ant recept through dummy (see Fig.)	1610 Kc	Hi end stop	5, 6 & 7	Adjust for maximum.
NOTE: Do not perform steps 3, 4, 5 & 6 unless the tuner has been tampered with or components have been replaced. Remove the escutcheon, dial scale assembly and dial background plate to expose the core screws. Before proceeding with step 3, back the tuning cores as far as possible out of the coils to eliminate their effect on trimmer adjustments.					
3.	Ant recept through dummy (see Fig.)	1610 Kc	Hi end stop	5, 6 & 7	Adjust for maximum.
4.	"	1200 Kc	Tuner carriage 9/32" from hi end stop	8, 9 & 10	Adjust for maximum.
5.	"	1610 Kc	Hi end stop	5, 6 & 7	Adjust for maximum.
6. Repeat steps 4 and 5 until no further increase, then cement tuning cores in place.					Step 5 should be the last adjustment.
ANTENNA TRIMMER					
7.	-	-	Weak station around 1400 Kc	7	With radio installed in car and antenna fully extended, adjust antenna trimmer for maximum.

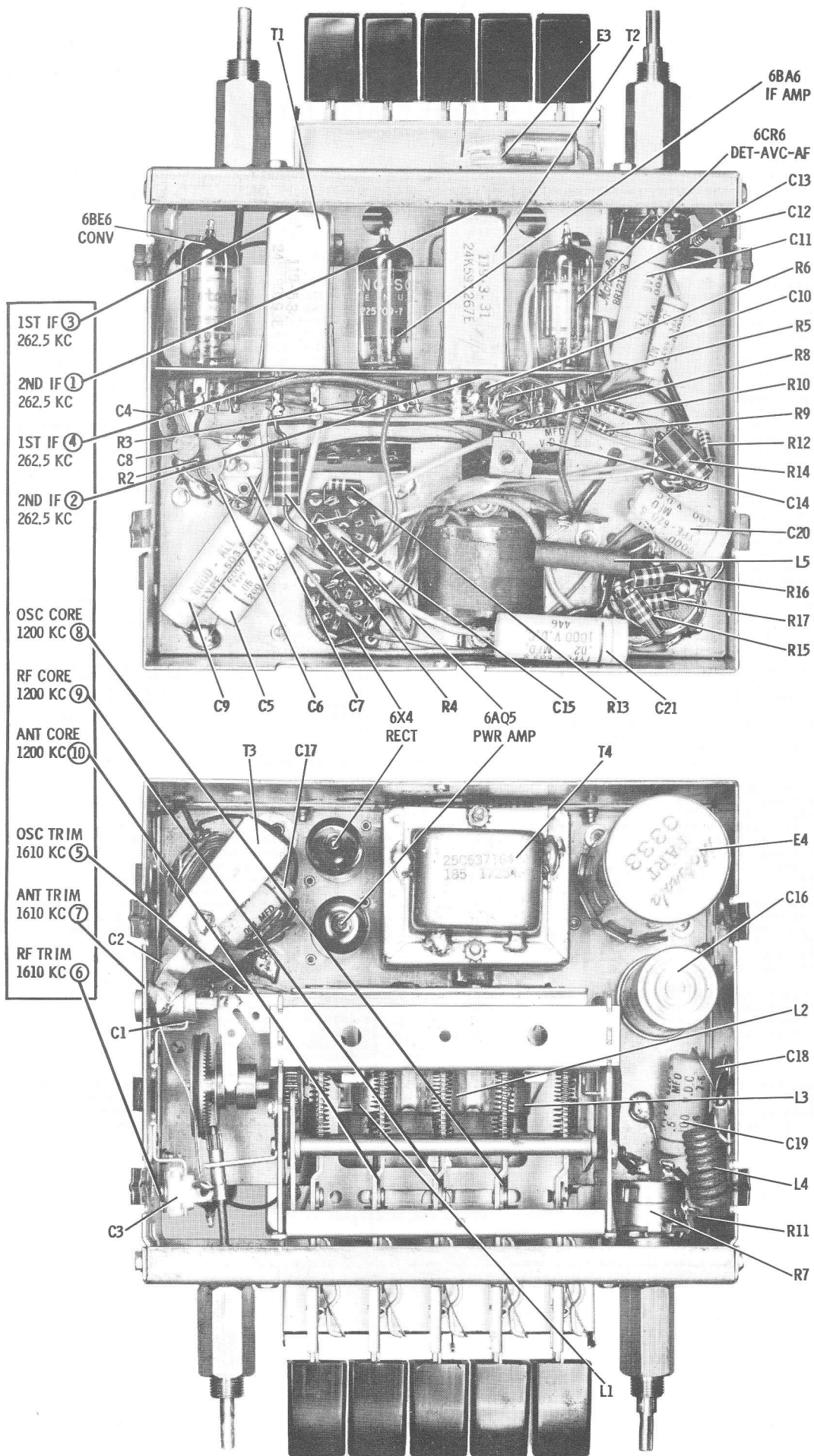


**DUMMY ANTENNA
DETAIL**

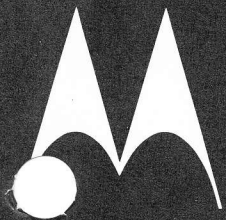


NOTES:
 CAPACITORS: Decimal values in MF, all others in MMF unless otherwise specified.
 VOLTAGES: Measured from point indicated to chassis with a VTVM. No signal input. Tolerance ± 10%.
 INPUT VOLTAGE: 7V
 TUNING RANGE: 535 KC to 1605 KC.
 IF: 262.5 KC.

SCHEMATIC DIAGRAM



ALIGNMENT ADJUSTMENTS AND PARTS LOCATIONS



MOTOROLA

Service Manual

AUTO RADIO
SUPPLEMENT NO. 1

MODEL
VWA7

SUPPLEMENT TO VWA7 SERVICE MANUAL PART NO. 68P541456

GENERAL INFORMATION

This supplement covers parts used on Model VWA7 auto radio when it is installed in a 1958 Volkswagen car. For

all other information, refer to the VWA7 Service Manual (Part No. 68P541456).

SUPPLEMENTARY REPLACEMENT PARTS LIST

NOTE: When ordering parts, specify model number of set in addition to part number and description of part.

Electronic parts of equivalent rating are not necessarily of equivalent standards. The components listed in this Service Manual have been chosen for reliability and applicability to the specific circuits involved. For maximum customer satisfaction and minimized call-backs, use the exact Motorola parts replacement.

Ref. No.	Part Number	Description	Ref. No.	Part Number	Description
<u>The following parts are used when installing a VWA7 in a 1958 Volkswagen.</u>					
	7B542795	Bracket, rcvr mtg: LH (dash)		8B538244	Condenser, voltage regulator
	7K542798	Bracket, rcvr mtg: RH (dash)		13B542780	Escutcheon
	7B542767	Bracket, rcvr mtg (rear)		2S2879	Nut, hex: 7/16-28 (rcvr mtg)
	*43K542776	Bushing, mtg: 1-5/16 long overall		34B542775	Scale, dial
				3S128062	Screw, tapping: #10 x 3/8 (spkr mtg)
				6A4141	Suppressor, distributor

*New Item, Appears in any List for First Time

MOTOROLA INC. 4545 WEST AUGUSTA BLVD. · CHICAGO 51, ILLINOIS