

9 10

5 6

1 2

11 12

7 8

3 4

Just a few tips



This is not an instruction manual, just a few tips for you to take along.

- ①
- ②
- ③
- ④
- ⑤
- ⑥
- ⑦
- ⑧
- ⑨
- ⑩
- ⑪
- ⑫



a Warning lamps
 Red for generator and cooling
 Green for the oil pressure
 Blue indicates switched-on headlight high beams
 Red at top - for direction indicator

b Direction indicator lever and light signal
 Push lever upward for right turn and downward for left turn toward steering wheel-light signal

c Electric clock

d Fuel gauge

e Hood lock control

The rear hood lock control knob is located behind the driver's seat on the vertical panel below the emergency seat

f Gear lever
 To be pushed down before reverse can be engaged

g Headlight dimmer switch

h Clutch pedal

i Brake pedal

k Accelerator pedal

l Hand brake lever
 To release, push in the knob

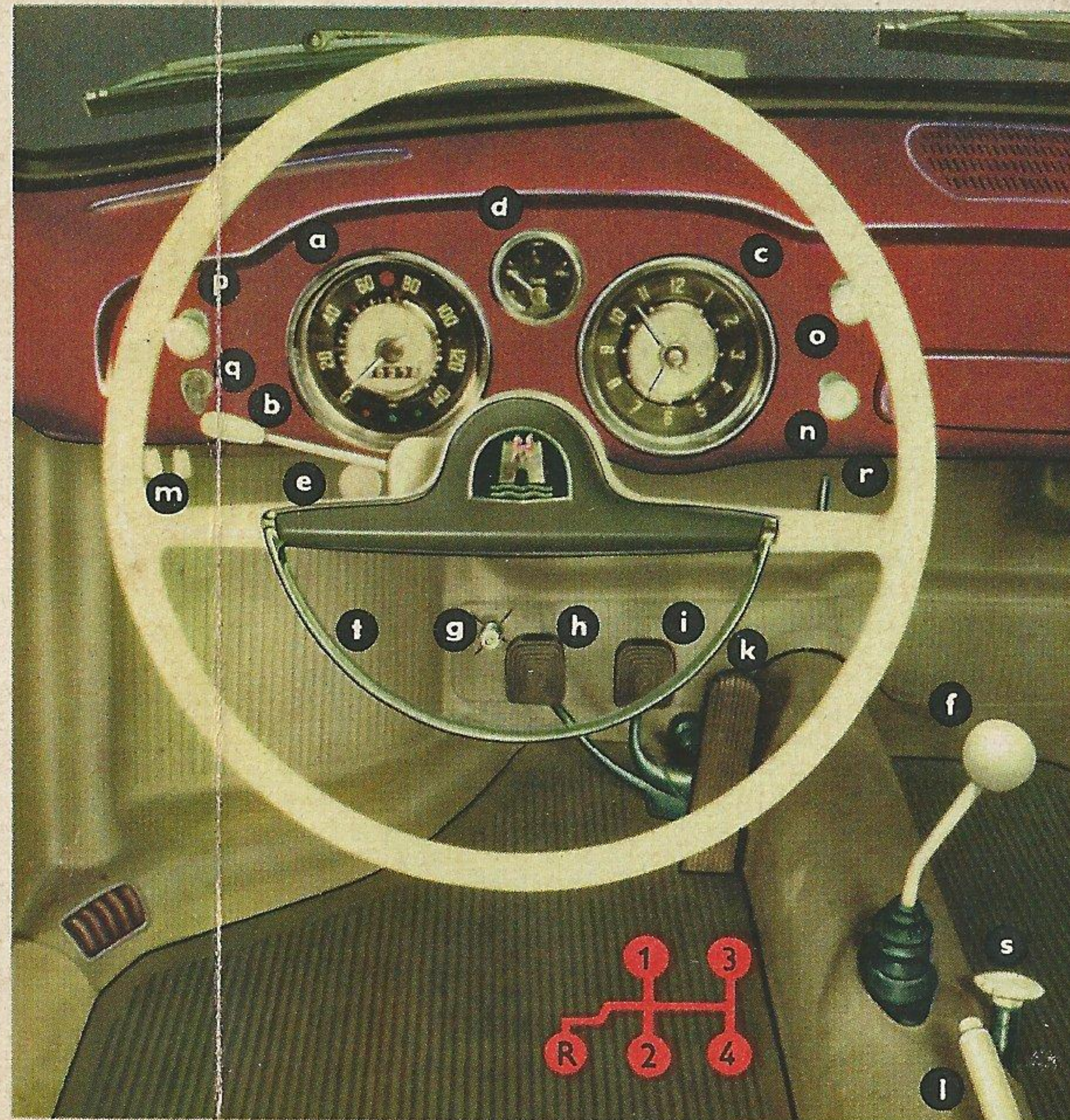
m Ventilator control
 To open - Push forward
 To close - Pull backwards

n Lighting switch
 Pull:
 1st stop — parking light
 2nd stop — headlights
 Turn:
 Instrument light brightness

o Windshield wiper
 Pull out

p Choke
 Pull out when starting cold engine

q Starting/ignition switch
 1 - To turn on ignition: turn key to the right
 2 - Starting: Press key inwards and turn to the right



r Fuel tap
 Position of fuel tap
 ↓ - open
 ↙ - closed
 ↘ - reserve

s Heating
 Turn to right - off
 left - on

t Semicircle horn ring

CONTENTS:

Car keys (1)
 Tire pressures (2)
 Gasoline (Petrol) (3)
 Engine oil (4)
 Starting (cold engine) (5)
 Starting (warm engine) (6)
 Fan belt (7)
 Clutch (8)
 Gears (9)
 Speeds (10)
 Driving economically (11)
 Jack and tools (12)

9 10

5 6

1 2

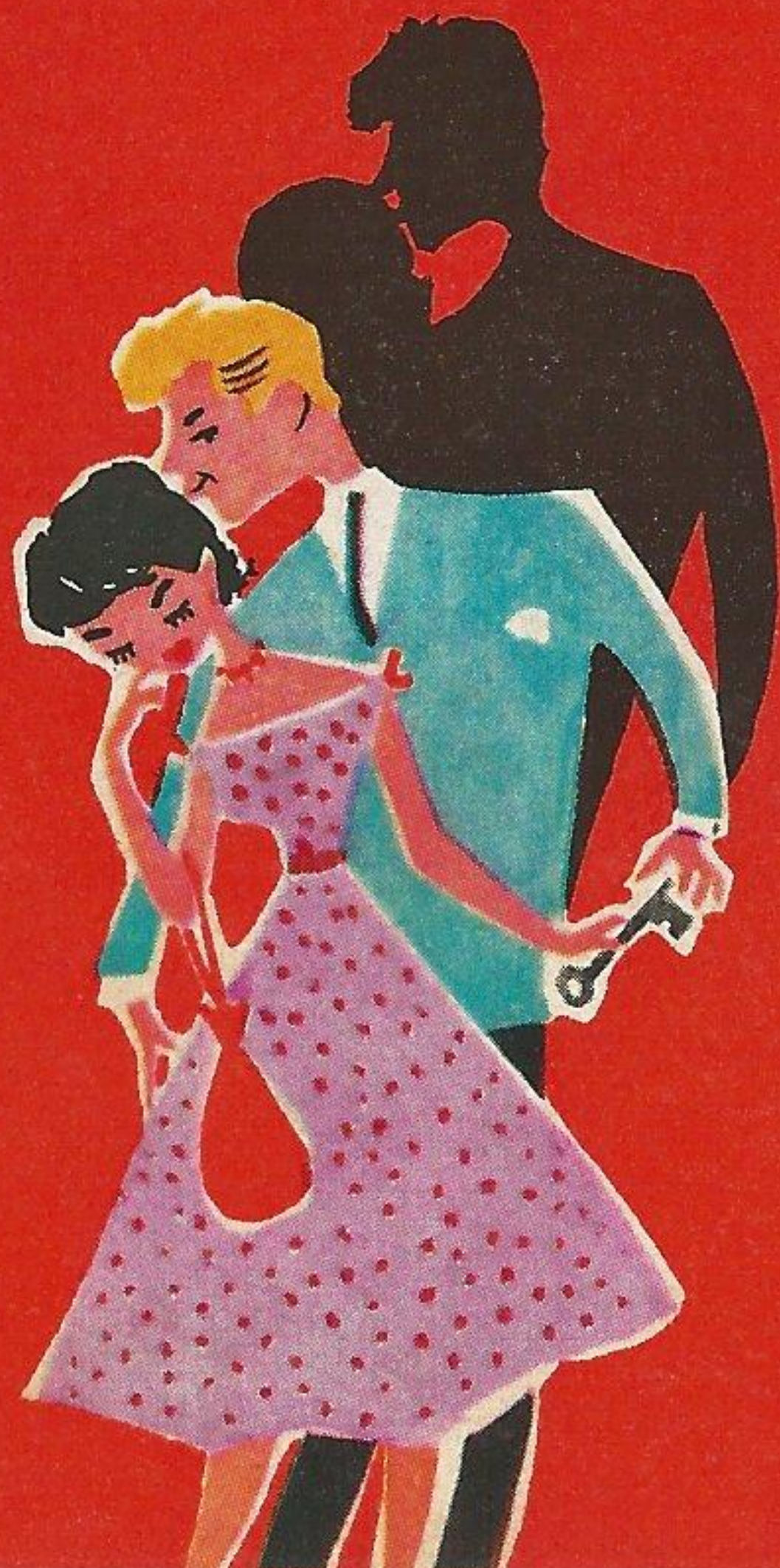
11 12

7 8

3 4

CAR KEYS

The same key unlocks the door, turns the ignition on and starts the engine.



TIRE PRESSURE

Keep the pressures between 16 and 17 lbs/sq. in. in the front tires, between 20 and 23 lbs/sq. in. in the rear tires.

When the car is fully loaded, or when driving fast for a long period of time, keep to the higher tire pressures.

GASOLINE

Choose your favorite gasoline, preferably one of the better known brands. The VW engine will respond to both regular and premium fuels with equally good performance.

A fuel gauge positioned between speedometer and clock will inform you of the quantity of fuel in the tank.

The positions of the fuel tap are easy to remember:

! Open

✓ Closed

← Reserve (1.3 U.S. gal., 1.1 Imp. gal.)



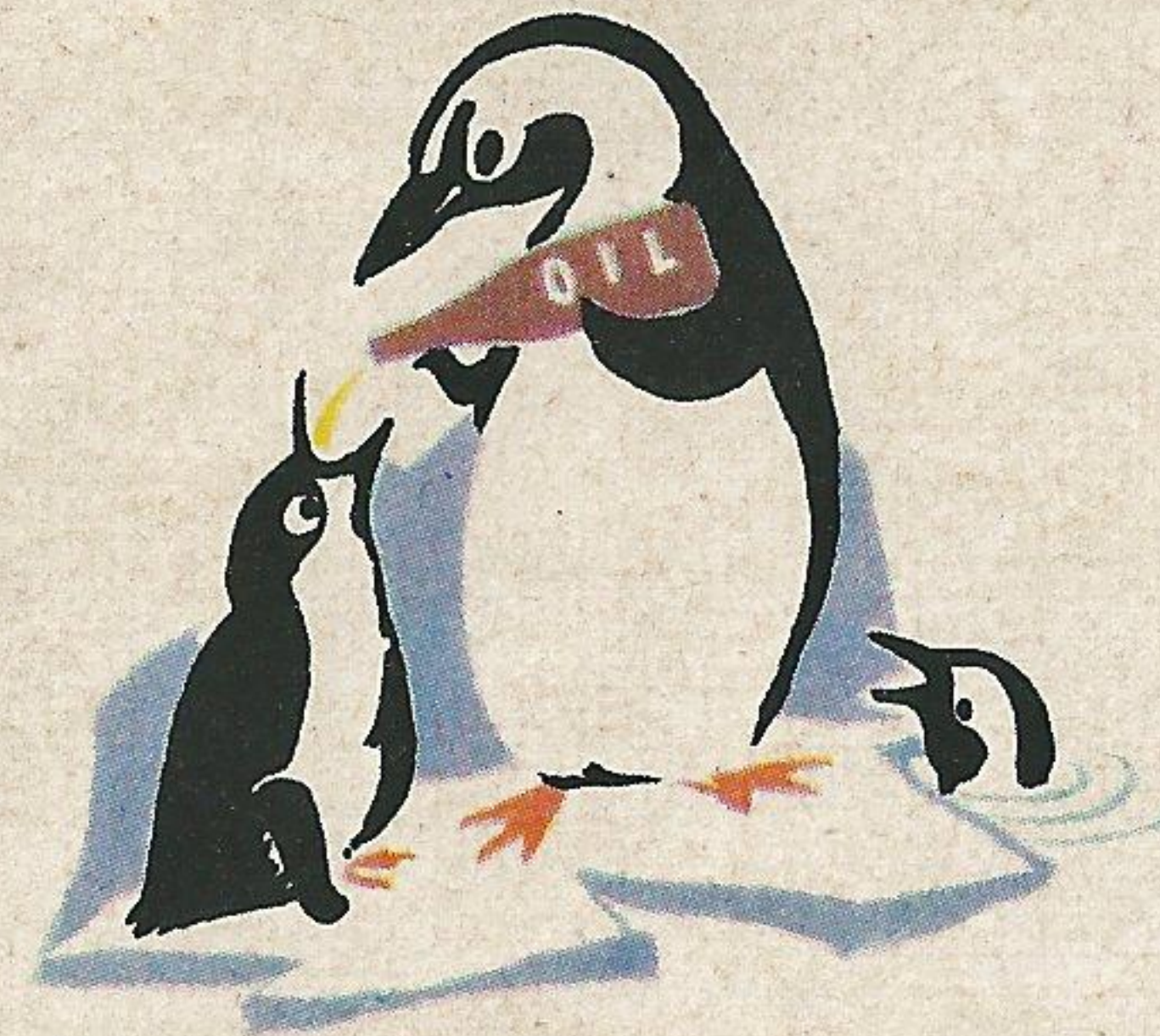
9 10

5 6

11 12

7 8

3 4



ENGINE OIL

Be sure the oil level is between the two marks on the dipstick. Add oil when level reaches the lower mark. SAE 20 W/20 engine oil is recommended for use within the mild temperature range from $+30^{\circ}\text{C}$ to 0°C ($+86^{\circ}\text{F}$ to $+32^{\circ}\text{F}$). Change over to SAE 10 W engine oil when the atmospheric temperature is anticipated to fall below 0°C ($+32^{\circ}\text{F}$).

In other words:

The engine should already contain SAE 10 W oil when the temperature drops below freezing point. SAE 5 W engine oil is most suitable when temperatures drop below -25°C (-13°F).

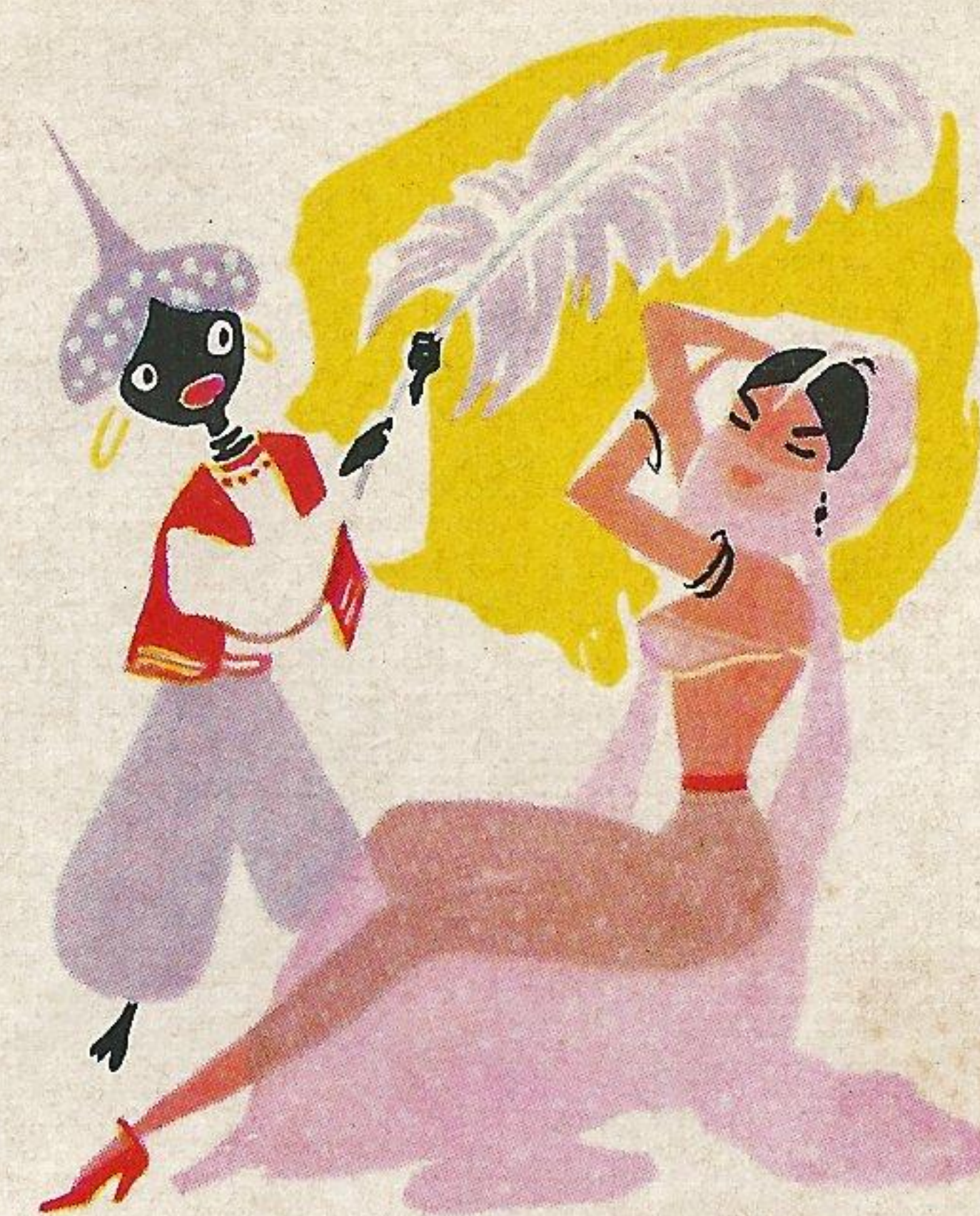
Always use oils of the proper viscosity, as described above, and of the proper type, labelled "For Service MS (HD)".

STARTING COLD ENGINE

- Pull choke all the way out.
- Turn ignition key to the right (ignition on).
- Press key farther in and, at the same time, turn it more to the right (starter engages).

In severe frost it is recommended to proceed as follows:

- a) slightly depress the accelerator pedal several times in quick succession.
 - b) fully pull out the choke control knob.
 - c) fully depress clutch pedal.
 - d) turn on the ignition and operate the starting motor.
- As soon as engine starts, release ignition key.
Avoid racing the engine immediately on starting up from cold.
 - When engine is running, push the choke in gradually until the engine runs smoothly at a fast idle.
 - As the engine warms up, push the choke in fully.
On cold days, this may take several miles of driving.



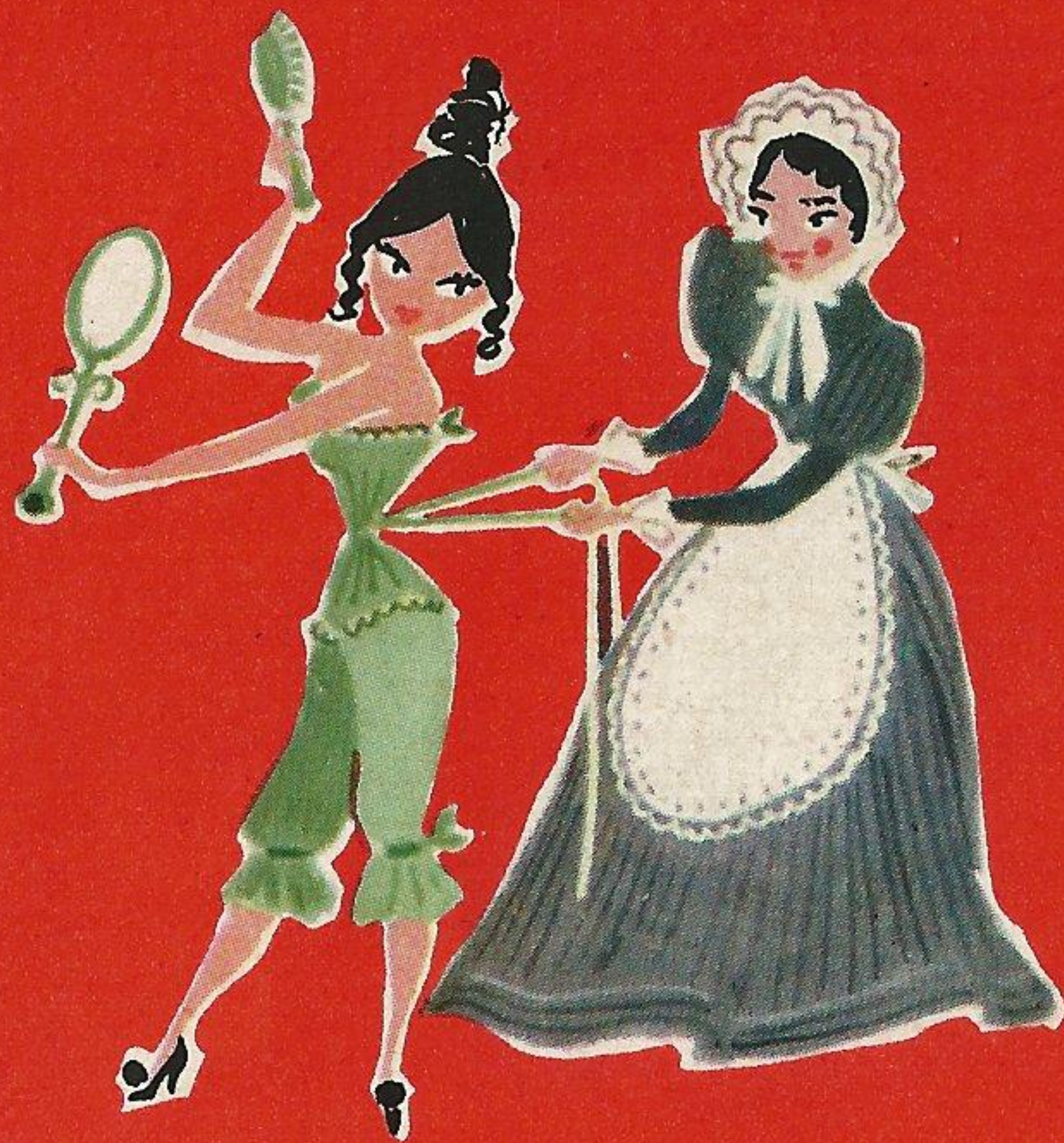
STARTING WARM ENGINE

- Do not pull choke.
- Turn ignition on and start your engine.
- While starting press accelerator slowly – do not pump.
- As soon as engine starts, release ignition key.

FAN BELT

Proper tension of the fan belt is important. Test the tension at mid-point by firmly pressing the belt down with your thumb. It should give about $\frac{3}{5}$ inch.

For full details read the corresponding pages in the instruction manual.



9 10

11 12

7 8



CLUTCH

In cold weather depress clutch pedal when starting your engine, since the transmission oil will be momentarily cold and stiff. After the engine has been started, release the clutch pedal slowly, while slightly depressing the accelerator pedal, so that the engine continues to idle smoothly and sufficiently fast.

GEARS

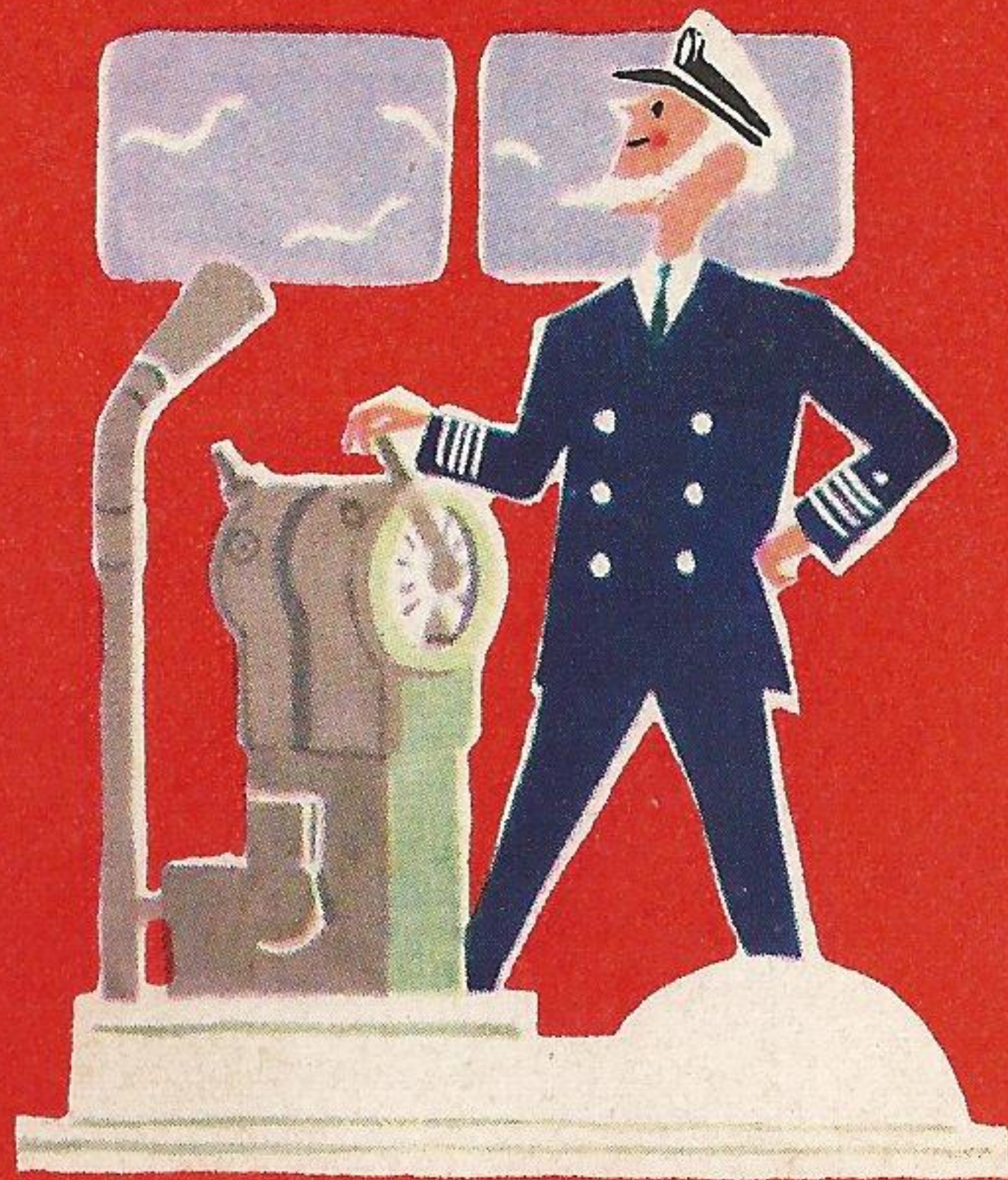
The 2nd, 3rd and 4th gears of the transmission are synchronized. The 1st gear is mainly used for starting the car in motion. Experienced drivers know the double-declutching method for shifting down from second to first when the car is in motion. If you are unfamiliar with this practice, just wait until the car has come to a stop.

The proper viscosity of the gear lubricant is

SAE 90 in summer and

SAE 80 in winter (if temperature drops below freezing point).

Have the oil changed in time, i. e., before the frost period.



SPEED RANGES FOR EACH GEAR:

First – from 0 to 15 miles per hour

Second – from 6 to 30 miles per hour

Third – from 14 to 45 miles per hour

Fourth – from 25 to 72 miles per hour

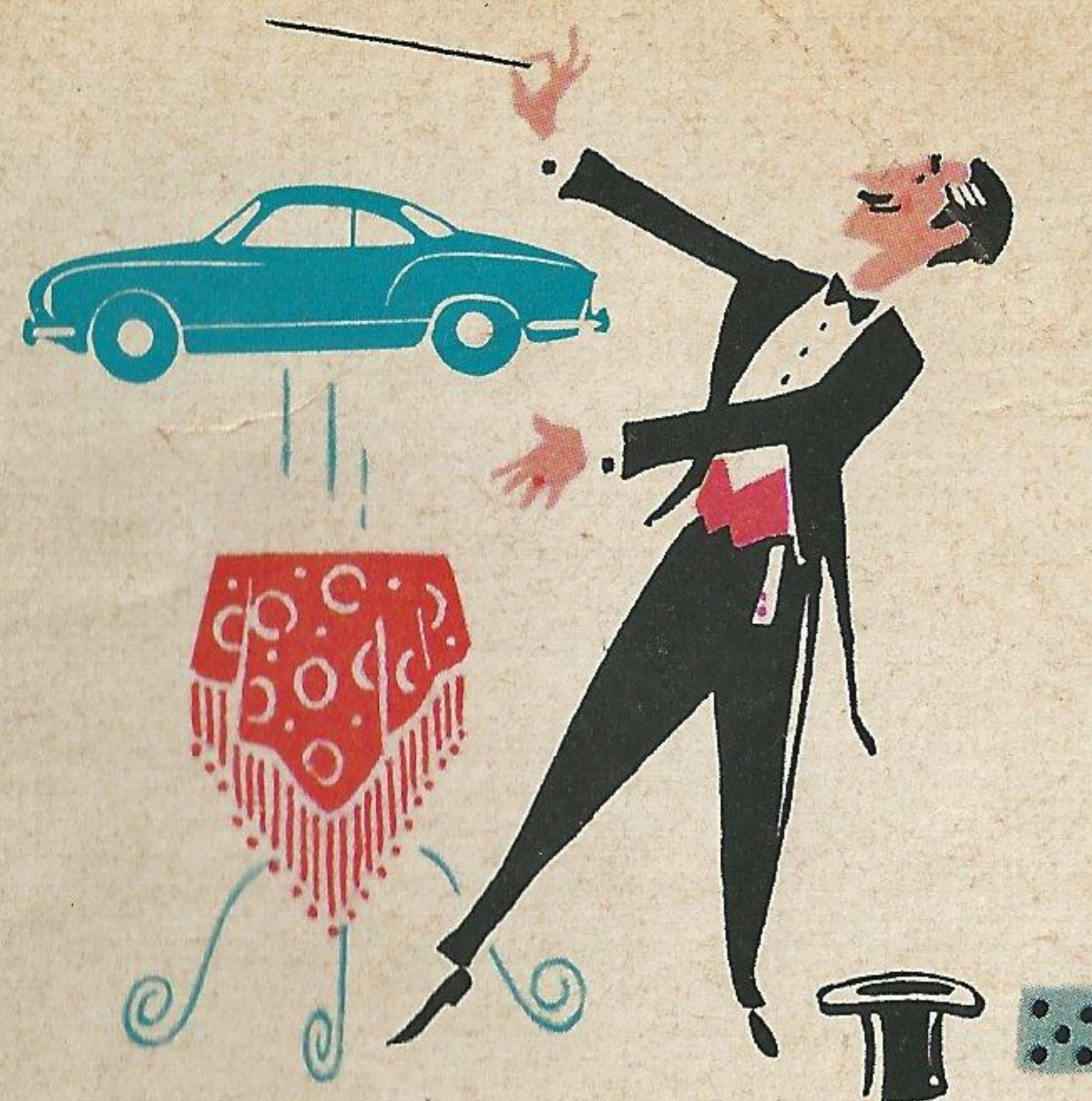
It is not necessary to “break-in (run-in)” a VW engine, but following are essential rules:

- Never “race” the engine either in gear or out. (In fourth speed, of course, you can drive with the throttle wide open for as long as you like.)
- Do not drive below the recommended minimum speeds in any gear. The engine labors at very low speeds.
- If, when climbing hills, the engine begins to slow down, be sure to shift to a lower gear so that the engine revolves easily and at a fairly high rate.

DRIVING ECONOMICALLY

No matter how hard you drive your VW you will find that it is one of the most economical cars to operate. However, to get the very most from your car:

- Accelerate by pressing the accelerator gently and gradually.
- Do not unnecessarily pump the accelerator.



JACK AND TOOLS

and the spare wheel are found under the front hood. To unlock the hood, pull out the control beneath the instrument panel.

If you have never used a jack before, please refer to the corresponding page in the instruction manual setting out in full its proper application.

Your VW Dealer will be glad to help you by demonstrating how to use it properly.

K A R M A N N
Phia

By this time you probably already realize your new car is a great automobile.

We know it will serve you well.

In order to know the car better, please read the instruction manual from cover to cover.

The better you know your car, the more you will get out of it.

It's a great car!

You'll find it's fun to drive.

VOLKSWAGENWERK GMBH