

The Caravelle.



The quintessence of space and elegance.

The Caravelle. A vehicle you can feel at ease in. A vehicle which meets your expectations – uncompromising in shape and function.

The Caravelle: a large saloon in keeping with the trends of the nineties. Great attention was paid to detail in designing the elegant equipment. Everything which makes the vehicle more spacious and pleasant to drive and "live in" has been thought of.

The harmonious lines of the body, the large windows and the distinctive visual impression characterise the appearance.

The elegant lines of the body have been emphasised by a spoiler under the front bumper on the Caravelle GL. Both bumpers are colour-coded.

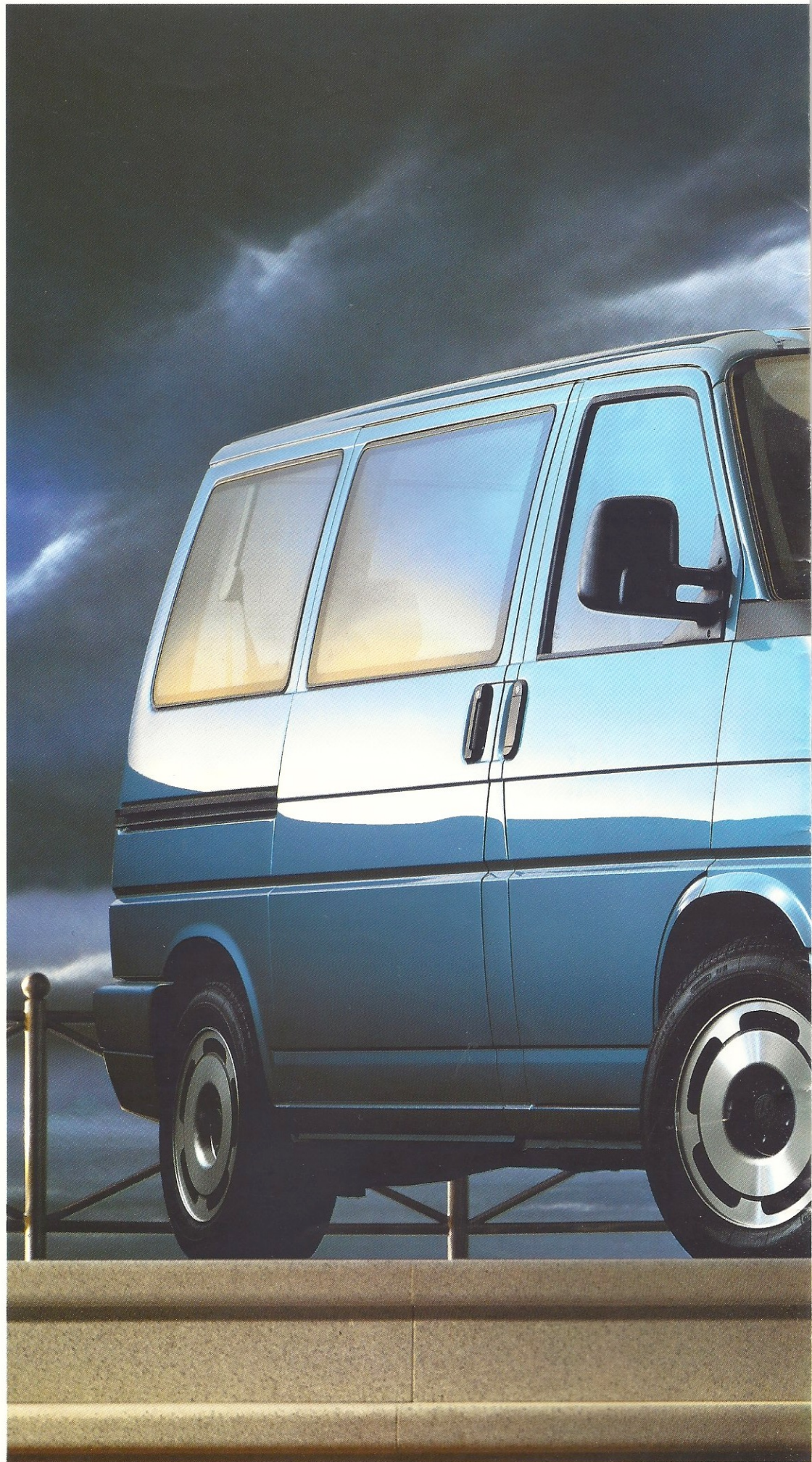
The aerodynamic body design does not only make an attractive and elegant impression, it is also very practical. With a drag coefficient of 0.36 the Caravelle has an absolutely top figure in its class. Combined with economical engines, this results in extremely low fuel consumption. With the 80 litre fuel tank, depending on the mode of driving, it is possible to drive over 1,000 km without stopping to refuel and even over 1,100 km with the 1.9 l diesel engine.

How is the Caravelle equipped? Very generously! Or to put it another way – it sets completely new standards in space and comfort, versatility and elegance.

The engine, gearbox and drive are at the front. The engine is installed transversely to be particularly space-saving.

The Caravelle is available in two equipment versions and with two wheelbases.

Caravelle GL
Optional extras:
alloy wheels,
fog lights.







**The Caravelle GL.
It's as inviting
as it looks.**

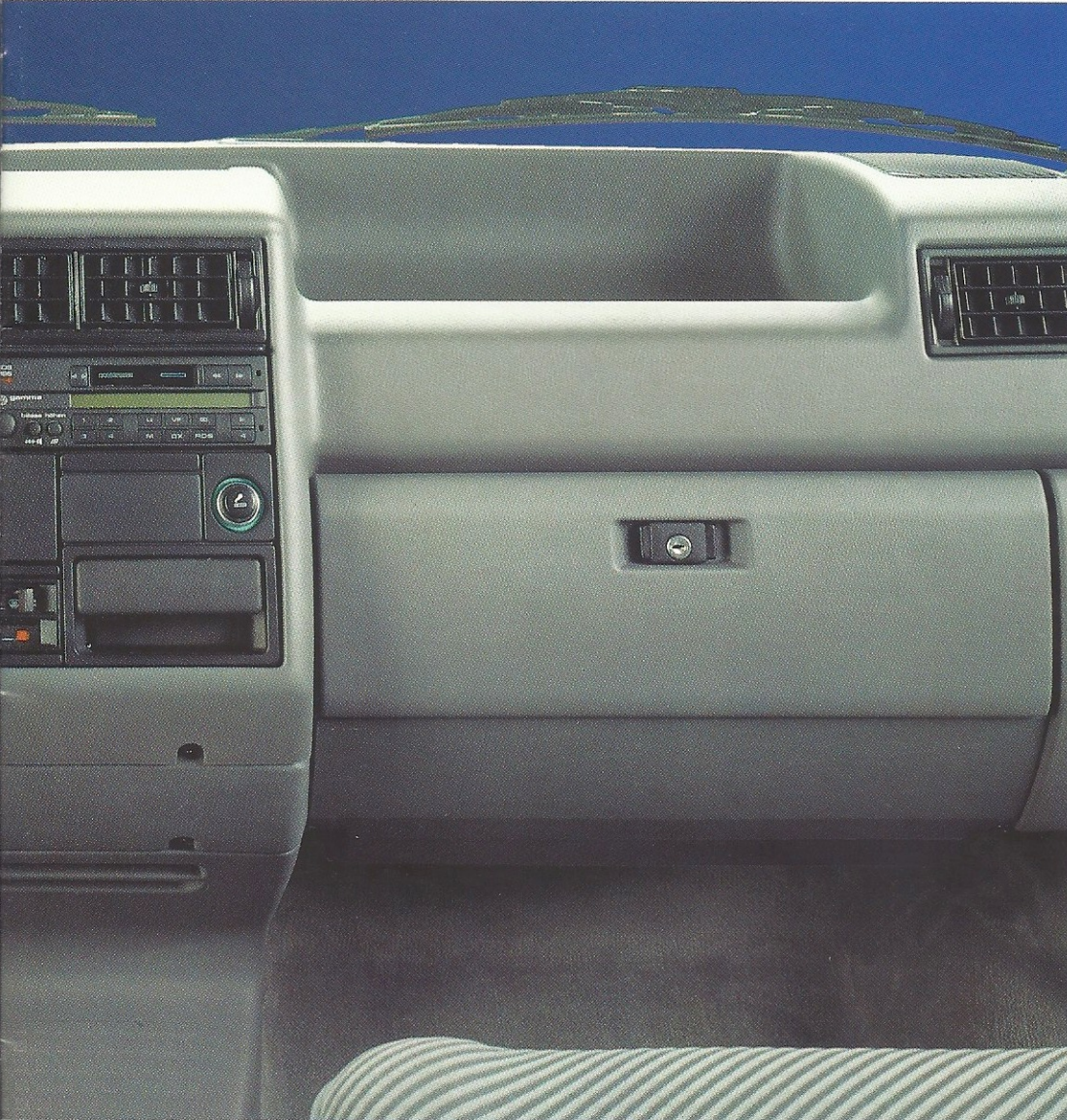
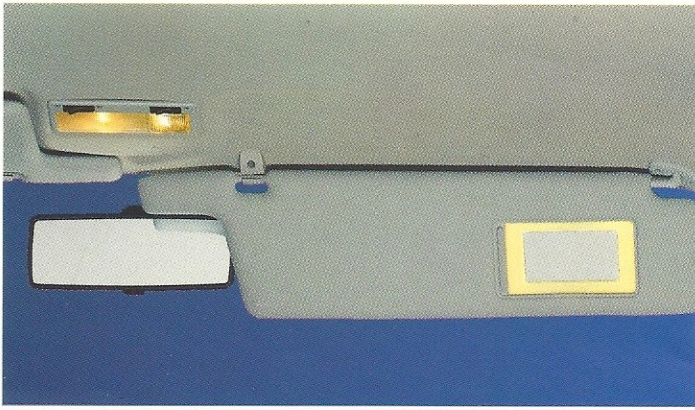
Driving enjoyment starts as soon as you get into this vehicle. Access to the vehicle via the entrance behind the front axle and the low step is extremely comfortable. Another convenient feature is that the illuminated step is covered by the door and thus protected from dirt.

One look at the fascia confirms that here again great attention has been paid to detail.

The controls are within easy reach and the standard 5-speed gearbox has light and precise operation. Power-assisted steering is standard on the GL version and on vehicles with 2.4 l diesel and 2.5 l spark ignition engine.

The functional and attractive instrument panel with analogue clock, trip recorder and handbrake warning light is dazzle-free and located in the driver's direct field of vision. Windscreen wipers with intermittent wipe facility ensure clear visibility, and an anti-glare rear view mirror and two large electrically heated and adjustable door mirrors enable the view to the rear to be checked.





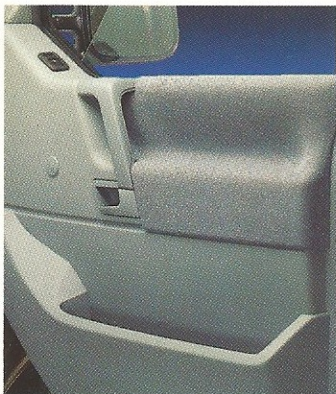
Talking about mirrors – a convenient feature of the GL version is the illuminated vanity mirror.

There are numerous storage facilities in the door trim, on the fascia and next to the centre bench seat for all items which are indispensable during the journey.

The floor is covered with velours carpeting. A powerful ventilation system creates a pleasant atmosphere inside the vehicle and, to assure the comfort of rear passengers, the Caravelle GL is equipped with an additional heat exchanger.

Further standard features of the GL are height-adjustable 3-point inertia reel seat belts in the driver's cab and a reading light next to the interior light.

Further equipment features shown here such as electric windows, rev counter and digital clock, radio, ABS and other items are available as optional extras.





**The Caravelle GL.
A model of variability.**

The aim of the designers of the Caravelle was to match the vehicle to the driver. One example which demonstrates how successful they were in designing a practical, variable vehicle is the rear bench seat which can be folded down.

The lock can be released and the rear bench seat folded forwards once in just one operation. A second operation is needed to fold the bench down once again making room for large items of luggage.

The backrest of the centre two-seater bench seat can also be folded down if required and converted into a table.

Should this still not be enough luggage space for you, you can order this vehicle with a wheelbase of 3320 mm instead of 2920 mm and a correspondingly larger interior.

Whatever you want to transport – whether sports and hobby equipment at weekends or everything the children need for both long and short journeys – this large saloon adapts itself to your individual wishes as required.





The anatomically correct seats are upholstered with velours fabric. All outer seats have 3-point inertia reel seat belts – all centre seats lap belts. The head restraints have a height and angle adjustment (GL version). A further advantage is the higher sitting position which gives you a better view of everything. The adjustable armrests in the Caravelle GL facilitate a comfortable sitting position and relaxed driving.

There is a special child-proof lock on the sliding door.

Elegance, comfort, variability and the highest degree of utility are all combined in a convincing way in the Caravelle GL.



The Caravelle.
A wide selection of seating arrangements.

The accent is on space and comfort here. To enable you to enjoy this to the full the entire seating has been designed accordingly. And what is more: you can adapt the seating to your own personal requirements. You have a choice not only of the number of seats but also regarding the type of seats.

This starts with the front seats. The driver's and front passenger's seats can also be supplied as pivoting seats. You will fully appreciate this feature when you turn round 180° to the rear to relax in your "living room".

And there is much more. By folding the backrests of the centre seats forward this creates convenient little tables for the family. The table tops can be used for games, drinks, painting books or biscuits – or just to put your feet up. There is room for everything here. There is enough "play" for large and small families, and travelling with good friends is twice as much fun in this vehicle.





However, to come back to the many choices. You also have a choice when it comes to the centre seats. You can have two single seats for this row or a two-seater bench seat. The single seats and the bench seat can be removed in one easy operation. This gives you additional stowage space if and when needed. Here again you have a number of possibilities: 1. with the large luggage compartment behind the rear bench seat; 2. by folding down this rear bench seat; 3. by folding down all seat backrests and finally 4. by removing the centre seats.

And to round off the range of seats: you can have single seats not only in the centre row but also instead of the rear bench seat, i.e. a Caravelle with a total of 6 individual seats.

A cover for the rear stowage space can be ordered as an optional extra. And there is still more to come. An extension piece is also available which you can use as a load surface or even to really "stretch out" and rest.

Where else do you have such a choice?



The Caravelle.
New dimensions in large saloons.

The trend towards large saloons is unmistakable – a trend which Volkswagen moulded in a decisive way with the preceding model. The designers of the Caravelle have – as you have already seen – endowed the vehicle with everything which will help it to meet this requirement even more fully.

In keeping with our aim to make optimum use of space, an exemplary concept has been created resulting in average passenger car dimensions – a manoeuvrable 4.65 m long (5.05 m on long wheelbase) and 1.84 m wide – for this large saloon.

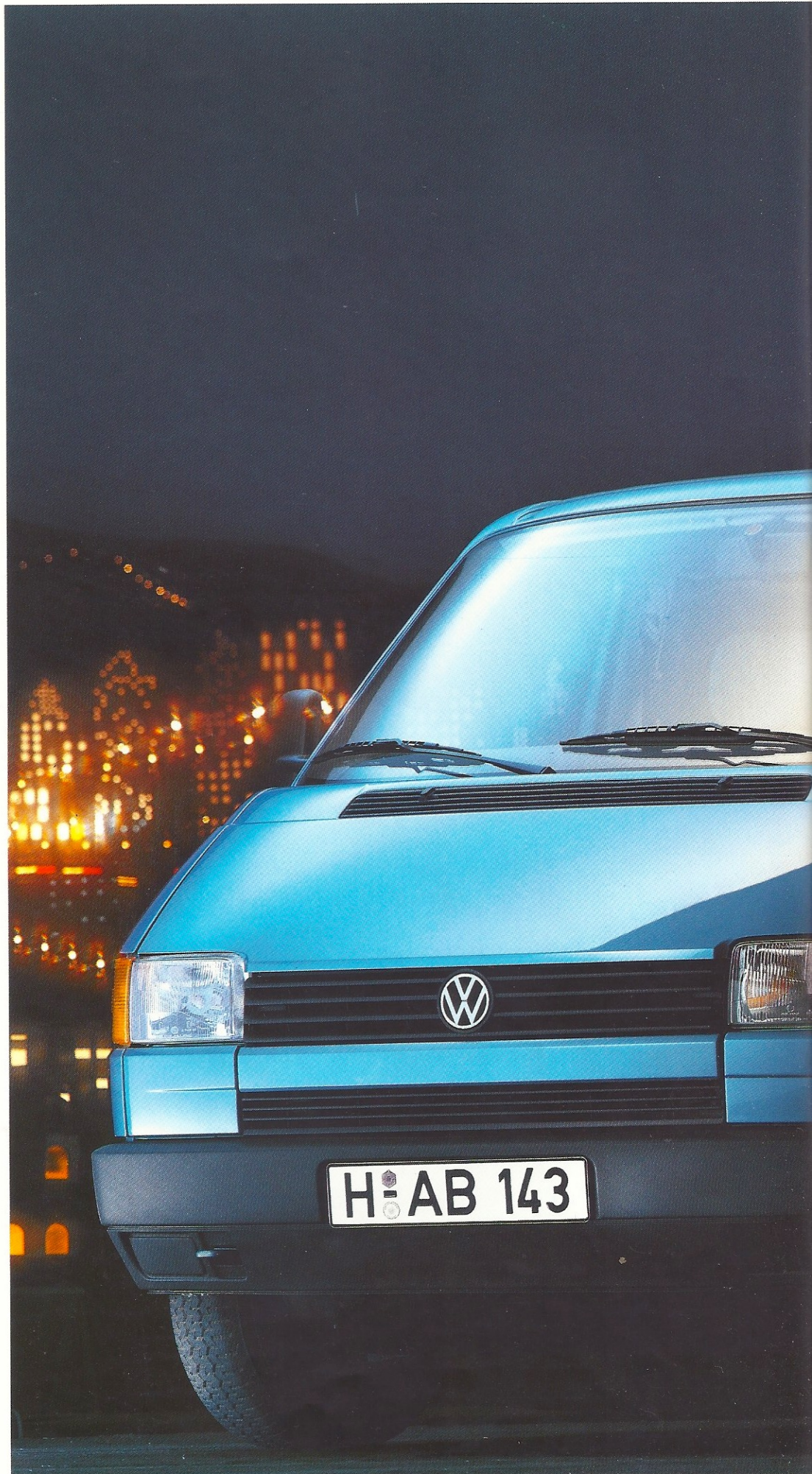
The equipment too will convince you. Everything which belongs in a generously equipped car is standard from the basic version upwards.

Features such as head restraints with height adjustment, stowage pockets on the driver's and front passenger's doors, lockable glove compartment, velours carpeting on the floor, illuminated step, handbrake warning lamp and childproof lock. Care has been taken to ensure comfort, utility and safety.

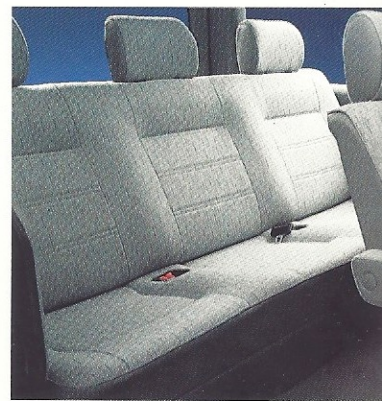
Not forgetting the careful attention to detail which rounds off the picture of the Caravelle. e.g. bonded windows, and the aerodynamic design of the flush-fitting door handles and door mirrors.

All in all, more "play" for the family, the children and for leisure, hobbies and sport.

Optional extra:
full wheel trim.







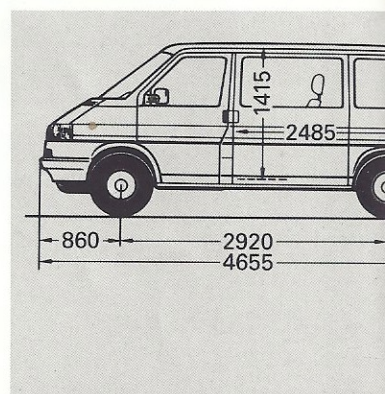
**Roomy, manoeuvrable,
luxurious and comfortable
– the Caravelle.**

Intelligent use of space was one of the most important objectives of development. We find that this has been achieved in a convincing way with the Caravelle concept.

Not only has the engine compartment been kept very small due to the space-saving transverse installation of the engine – something from which interior space profits. The front and rear axle have also been arranged so that nothing is in the way in the interior.

The number of seats is variable. You decide whether your Caravelle is a 6, 7, 8 or 9-seater. A cunning new seat mounting enables the seats in the first row to be removed easily.

And loading is easy with the low loading surface and large tailgate.

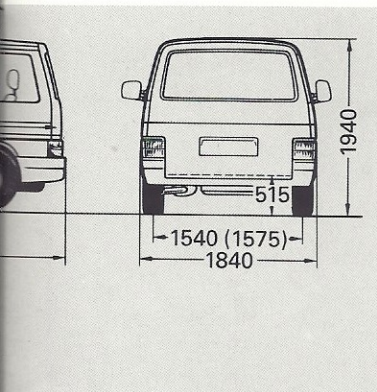




And if it rains – no problem. You and your weekend shopping, your bags and suitcases all keep dry as with the tailgate open you always have a roof over your head.

Talking about comfort, where others are thwarted by a narrow parking space, you can open the sliding door even if space is limited. Getting in and out of the car couldn't be easier, could it?

Why not try it for yourself? You are welcome to view the Caravelle, without obligation. We look forward to your visit.



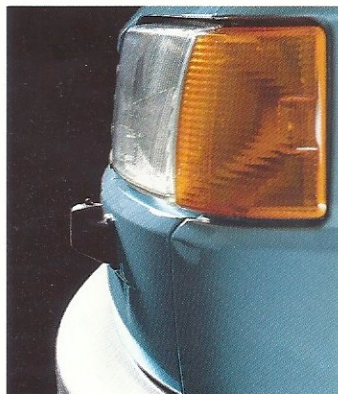


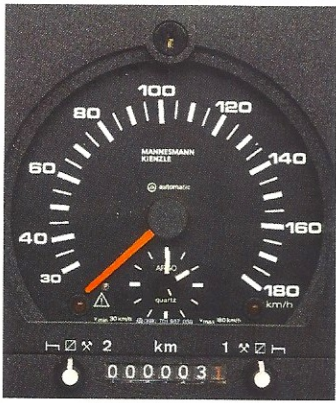
The Caravelle.
Special equipment options.

As you have been able to see, the standard equipment is already tasteful and comprehensive.

However, it is only human to have individual special wishes. Our comprehensive range of optional extras will, we are sure, cater for a number of your wishes.

Whether you would like ABS, cruise control or a 4-speed automatic gearbox with display in the instrument panel, electric windows, central locking, electronic tachograph or a rev counter which tells you when it is time to change gear so as to look after the engine and save fuel. And of course power-assisted steering for the 2.0 l spark ignition and the 1.9 l diesel engine.

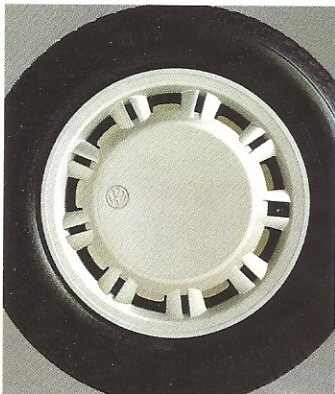


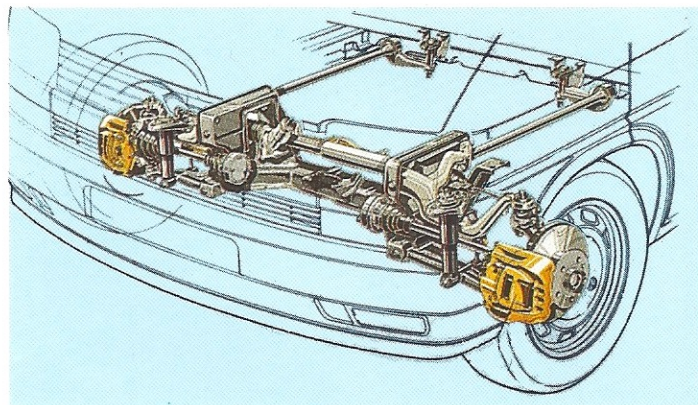


And if you would like to round this off in a sporty way: alloy wheels and full wheel trim are also in the range.

For additional safety there are halogen fog lights which ensure good visibility on foggy days, and a headlight cleaning system which functions at the touch of a button.

The glass roof which brings sunshine, air and light into the driver's cab and passenger compartment also contributes to driving enjoyment. And there is an air conditioner to assure an even, pleasant temperature. Anything else you would like? Your Volkswagen Dealer will be pleased to fulfil any further wishes.



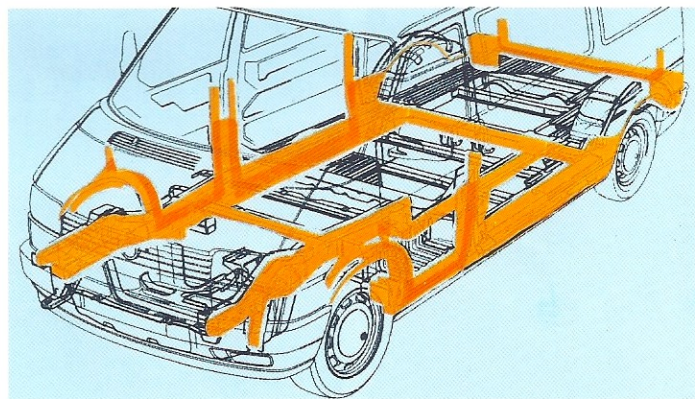
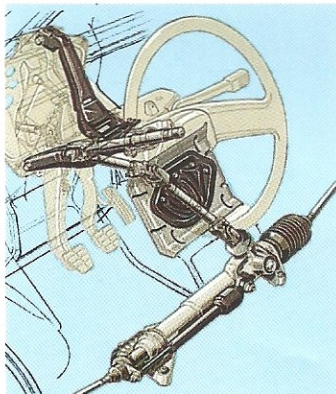
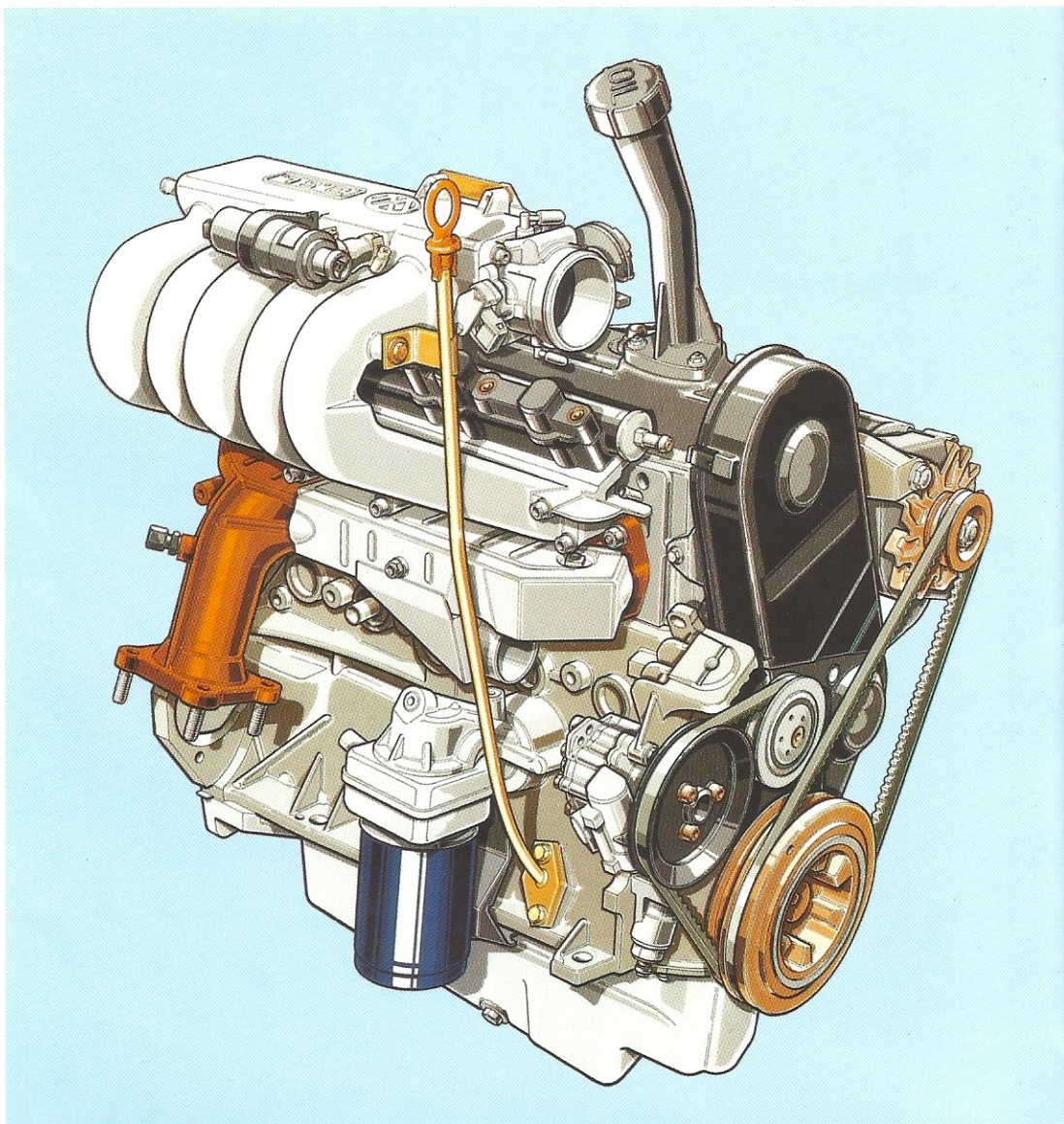


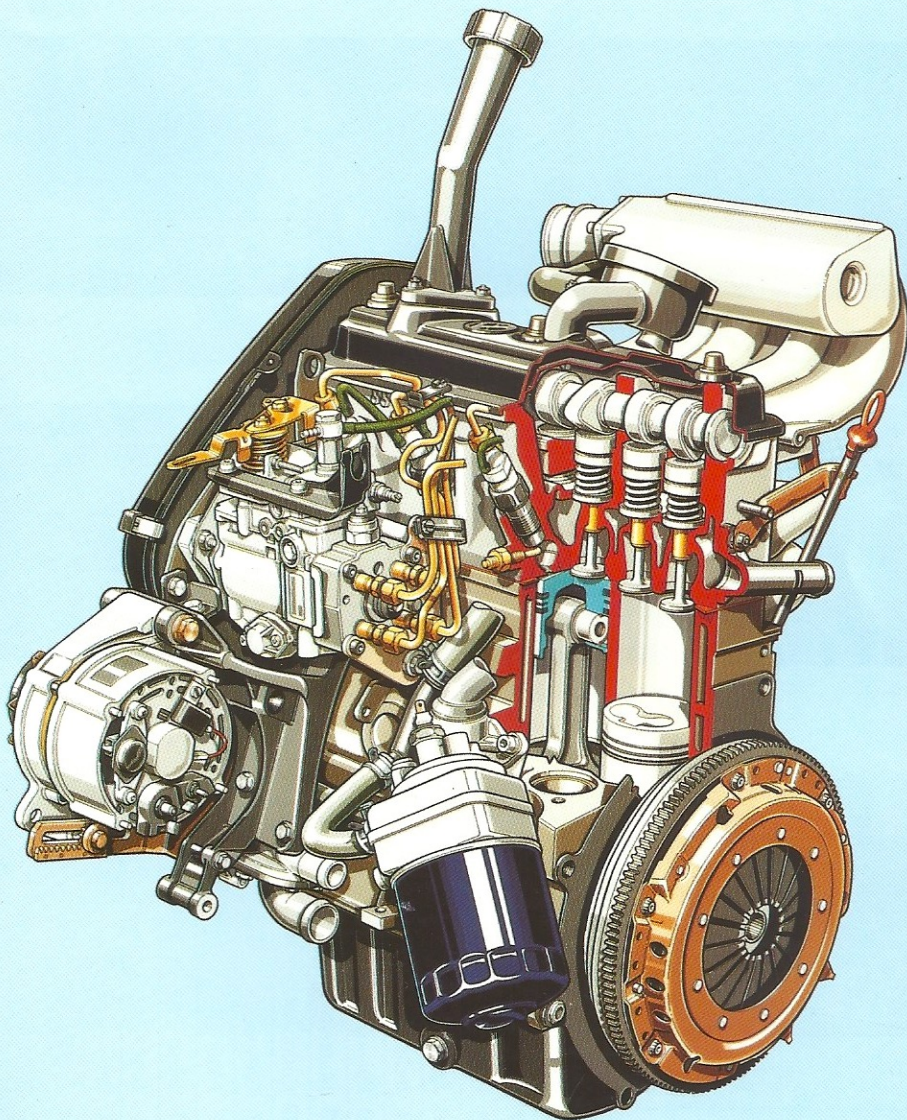
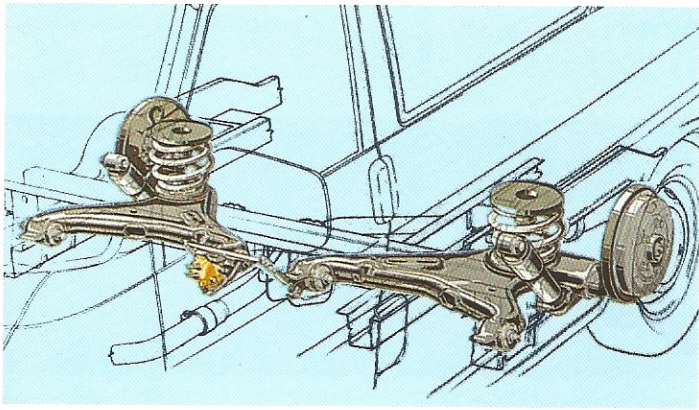
The Caravelle.
Top technology on the road.

The new Caravelle has convincing, high-grade technology. The powerful range of engines with favourable fuel consumption consists of two spark ignition engines (with regulated cat.) with 62 kW (84 bhp) and 81 kW (110 bhp) and two diesel engines with 45 kW (61 bhp) and 57 kW (78 bhp). A 5-speed manual gearbox is standard on all vehicles.

To ensure the greatest possible safety, the light rack and pinion steering has a break-away element. To attain above-average road performance and a high degree of ride comfort, investment was made in the best conceivable running gear: independent suspension at front and rear.

The compact construction of the front axle, a double wishbone axle with oscillation dampers and longitudinally located torsion bars, creates a generous amount of space in the footwell. The diagonal trailing arm rear axle with miniblock coil springs facilitates a large



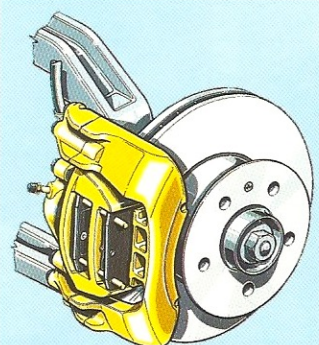
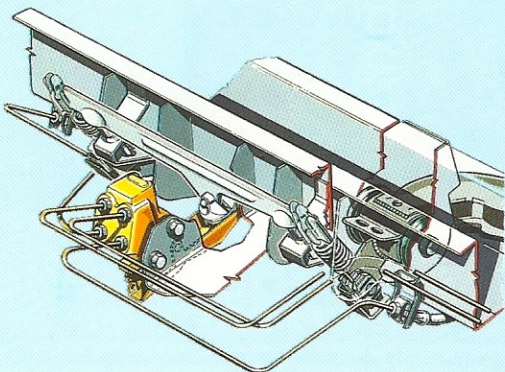


through-loading width between the wheel housings.

The Caravelle has a load and pressure-dependent brake pressure reducer as standard. This ensures the best possible braking effect in all load conditions and when cornering, and prevents premature wheel lock. ABS is available as an optional extra for all models. Great care has been taken to assure value retention. All body cavities are flooded with hot wax.

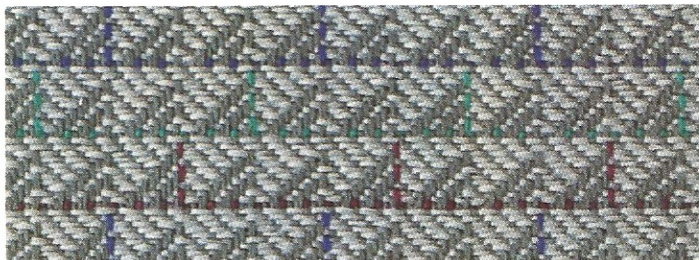
Special priority was given to environmental protection. Fuel consumption has been noticeably reduced, which means – less fuel, less pollutants. Paints without lead chromate and cadmium pigments are used for the top coat and only water-soluble base paints for metallic paint finishes.

You are looking at the Caravelle – technology in keeping with the times.

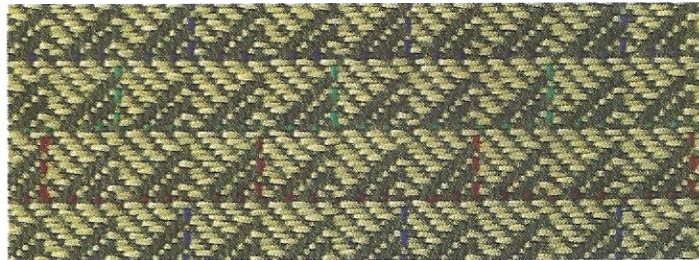


At a glance: possible colour combinations of paint finishes and upholstery

Upholstery Caravelle



Light grey '93 XC



Sahara '93 XD

Flat weave cloth upholstery, Como pattern



Sahara ME



Light grey MD

Foamed leatherette upholstery, Diagonal stripe pattern

Upholstery Caravelle GL



Light grey ES



Sahara ET

Textured flock upholstery, Diagonal flock pattern



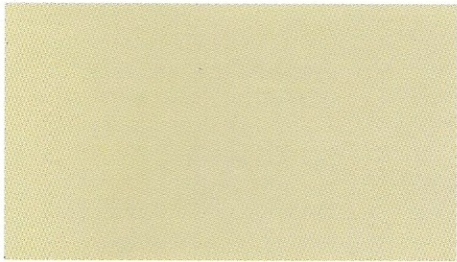
Neptune blue EF

Paint finishes	Caravelle														
	B7	B8	D9	F3	G9	H3	M2	T7	A5	C1	J1	J3	K4	L6	Y1
Manila beige	-	●	●	●	●	●	●	●	○	○	-	○	○	○	-
Cayenne yellow	●	-	●	●	-	●	●	●	-	-	-	○	○	○	○
Java green	-	●	●	●	●	●	●	●	○	○	-	○	○	○	-
India blue	-	●	●	●	●	●	●	●	○	○	-	○	○	○	-
Polar grey	-	●	●	●	●	●	●	●	○	○	-	○	○	○	-
Marsala red	-	●	●	●	●	●	●	●	○	○	-	○	○	○	-
Caribbean green	-	●	●	●	●	●	●	●	○	○	-	○	○	○	-
Grey white	-	●	●	●	●	●	●	●	○	○	-	○	○	○	-
Mountain grey metallic	-	●	●	●	●	●	●	●	○	○	-	○	○	○	-
Silver grey metallic	-	●	●	●	●	●	●	●	○	○	-	○	○	○	-
Smoke grey metallic	-	●	●	●	●	●	●	●	○	○	-	○	○	○	-
Atlantis blue metallic	-	●	●	●	●	●	●	●	○	○	-	○	○	○	-
Jamaica blue metallic	-	●	●	●	●	●	●	●	○	○	-	○	○	○	-
Bordeaux pearl effect	-	●	●	●	●	●	●	●	○	○	-	○	○	○	-
Sahara metallic	-	●	●	●	●	●	●	●	○	○	-	○	○	○	-

	Upholstery	Fascia
	Flat weave (cloth), Como pattern	
XC	Light grey '93	Medium grey
XD	Sahara '93	Sahara
	Foamed leatherette, Diagonal stripe pattern	
MD	Light grey	Medium grey
ME	Sahara	Sahara
	Textured flock (cloth), Diagonal flock pattern	
ES	Light grey	Medium grey
ET	Sahara	Sahara
EF	Neptune blue	Neptune blue

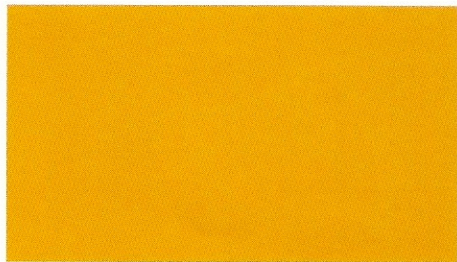
The table indicates whether a paint finish is available as standard (●), optional extra at extra charge (○) or not available in combination with a particular upholstery (-).

At a glance: paint finishes



Manila beige*

B7



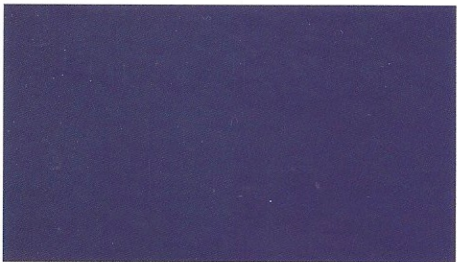
Cayenne yellow*

B8



Java green*

D9



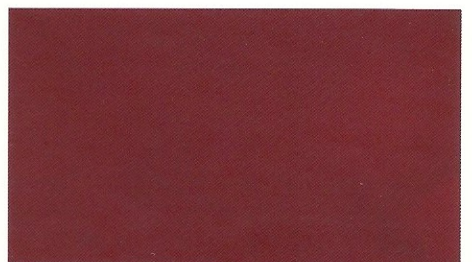
India blue*

F3



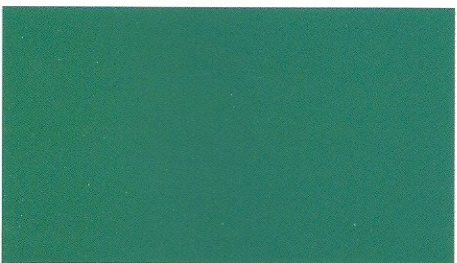
Polar grey*

G9



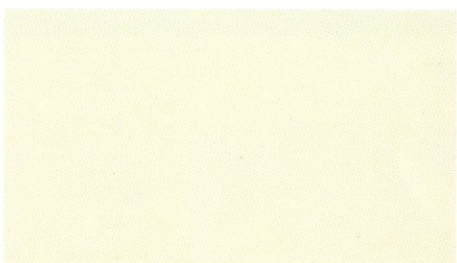
Marsala red

H3



Caribbean green

M2



Grey white

T7



Mountain grey metallic*

A5



Silver grey metallic*

C1



Smoke blue metallic**

J1



Atlantis blue metallic

J3



Jamaicablue metallic

K4



Bordeaux pearl effect

L6



Sahara metallic

Y1

The samples illustrated here should only be taken as an approximate guide, as the printing process cannot reproduce the true depth and brilliance of the paint finishes or the attractive textures of the upholstery.

* Not for Caravelle GL
** Not for Caravelle.

Our Volkswagen Dealers for commercial vehicles can help you with your decision in choosing the right vehicle and provide comprehensive, reliable after sales support.

Information before buying

The Volkswagen transport costs service offers you invaluable help in making the right purchase decision because as soon as you acquire a vehicle, you must make allowance for subsequent costs. The overall cost of running a vehicle must therefore be considered when purchasing. Your Volkswagen Dealer for commercial vehicles will be glad to advise you.

After sales support from the Volkswagen Service for Volkswagen Commercial Vehicles

This includes:

- an extensive service network which means it is only a short distance to the nearest workshop thus saving time and money
- specially equipped workshops with experienced, well-trained personnel
- comprehensive stocks of Genuine Volkswagen Parts – both new and exchange
- the Volkswagen Accessories Service.

This is just a selection from a wide range of services aimed at keeping your commercial vehicle operational at all times, reducing the periods when it is off the road to a minimum.

And as further proof of top performance a 12-month warranty without distance limit on all Volkswagen commercial vehicles, a 12-month warranty on Genuine Volkswagen Parts whether new or exchange, a 12-month warranty on all workshop services, a 6-year warranty against rusting-through and a 1-year warranty for paint defects.

In addition, Volkswagen commercial vehicles require little maintenance work and are unusually easy to maintain. And a vehicle that only needs maintenance infrequently avoids unnecessary expense. Technical progress has made it possible to reduce maintenance requirements considerably. The low-maintenance Volkswagen Caravelle versions require a Volkswagen Inspection every 12 months, including Lubrication Service and exhaust emission testing in countries where this is obligatory. Additional maintenance work is only necessary every 30,000 km (20,000 miles). An additional Lubrication Service is due every 7,500 km (5,000 miles) for vehicles with diesel engines and every 15,000 km (10,000 miles) for vehicles with spark ignition engines, if annual distance covered is more than 15,000 km (10,000 miles). Examine what we have to offer and decide which vehicle to buy after a thorough test drive, whenever or wherever it suits you – at our premises or yours.

The paper used for this brochure is made of unchlorinated, bleached cellulose.

All details in this publication are correct at the time of going to print but may have changed by the time you purchase your vehicle. Some illustrations show special equipment options which are not included in the standard specifications.



**Volkswagen –
you're onto a good thing.**

At your Volkswagen Dealer: