

**Why your next employee
should be a Volkswagen.**



It works for less.

Like all Volkswagens, a VW delivery van or window van works on less oil. Less than 4 quarts. And between oil changes it rarely needs more.

You'll never have to buy anti-freeze. Or fill a radiator. Or repair a radiator. There's no radiator.

And, of course, you buy regular, lower-priced gas.

Altogether, including gas, oil, tires and maintenance, your Volkswagen delivery van should prove to be a very thrift-minded employee.

And if you're like many Volkswagen owners, you'll probably drive it for a long time.

So before you ever load it up, you know one thing a Volkswagen van can deliver.

VW economy.

It isn't fussy about working conditions.

Neither heat nor cold will keep a VW van from your delivery appointments.

Because the air-cooled engine uses no water, it can neither boil over nor freeze up.

Even when roads are slick you can count on a Volkswagen van. The rear brake circuit is

equipped with a brake pressure limiting valve, to help prevent your rear wheels from locking and the front wheels have power assisted disc brakes for sure and quick stops.

High ground clearance makes it easy to get over rocky or washboard roads.

And the added traction of our rear mounted engine makes it easier to get through mud, sand or snow.

But just getting through isn't enough for any Volkswagen. That's why our vans have double-jointed rear axles and radial ply tires for better road holding and a smoother ride.

And a 4-wheel independent torsion bar suspension system. Which allows each wheel to take each bump separately.

So even though you cart things around, our VW van doesn't ride like an old crate.

It's resourceful.

It'll hold a ton of stuff. Or 176 cubic feet. But it's only a few inches longer than our little bug.

So even though it's big enough for almost any job, it's also small enough to squeeze in where most trucks fear to tread. Like car-sized



parking spaces, and double-parked, skinny streets. But size isn't all.

There's an aisle between the front seats so you don't have to climb out to get in the back.

The back door swings up, not out, so you can approach the rear from either side.

And the side door slides open, so you can't smack it into cars, trucks, buildings or people, no matter how tight the fit. And it opens from inside or out.

It spends less time away from the job.

Every one of our vans goes through the same rigorous inspection routine as every one of our little bugs.

So by the time you get it, it's as perfect as we know how to make it.

But when something goes wrong along the way, VW's service department will make sure it's not for long.

Because soon VW dealers will be able to offer you VW computer diagnosis. (Computers will be installed in most major VW dealerships during 1973.)

Implanted throughout every VW delivery window van is a network of probes and sensors. They transmit information about the condition of important parts of the van to a central socket. When plugged into a computer, the VW van begins to report how well these parts are performing. All without human error.

Vital service points are checked in less than 30 minutes and the results are printed out in plain English for you to read.

When you buy a new VW van we'll start you off with 4 free Computer Diagnoses. In addition to one free maintenance, and a 2-year or 24,000-mile warranty (see back page.)

And it has experience.

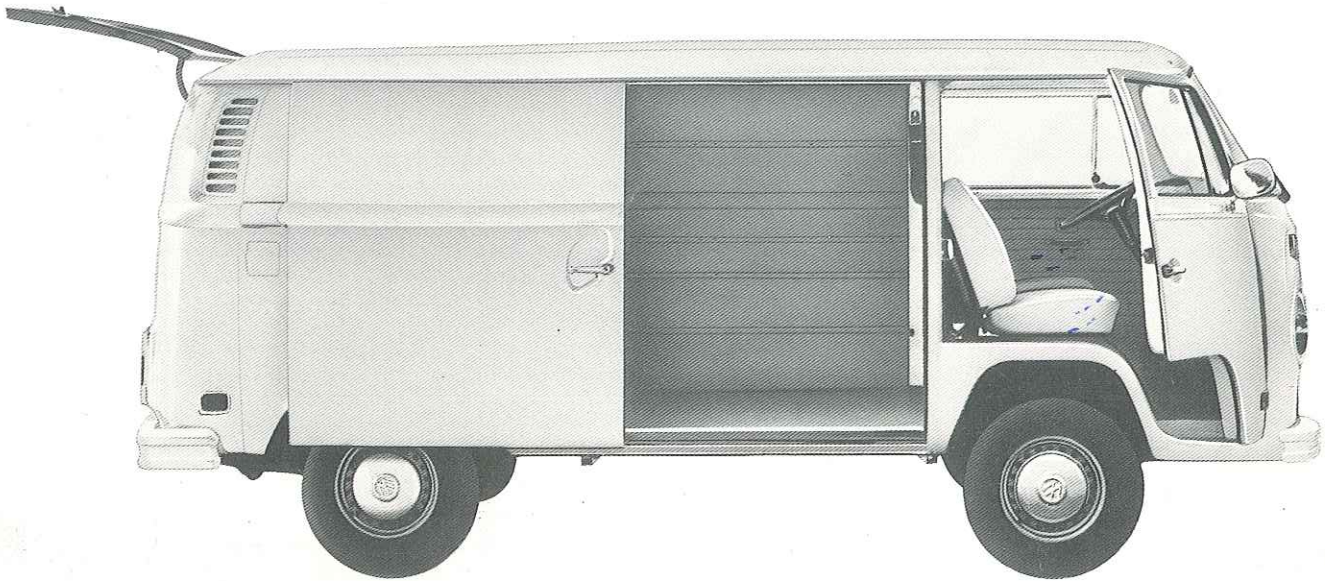
In about 120 countries. Delivering everything from our daily bread to the Saturday night dance band.

And in 22 years on the job. And getting better every year. (We've never been content to let our first model just ride along.)

So for all these reasons, you should hire a Volkswagen delivery van. You'll find it makes good business sense in every way but one.

It's not much of a tax deduction.





1973 Specifications

ENGINE:	Type	4 cycle, air-cooled, rear mounted
	No. cylinders	4 cyl., opposed
	Bore	3.54 inches
	Stroke	2.59 inches
	Displacement	102.5 cubic inches
	SAE Net H.P.	63/4800 rpm
	Max. Torque, SAE Net	81 ft. lbs./3200 rpm
	Compression ratio	7.3:1
	Carburetion	Twin downdraft, auto. choke w/combined idling circuit
	TRANSMISSION & DIFFERENTIAL:	Type
No. speeds		4 forward, 1 reverse
Gear ratios 1-4		3.78/2.06/1.26/0.82/R-3.78
Final drive		5.375:1
CHASSIS & SUSPENSION:	Clutch	Single disc, dry. Diaphragm type
	Frame	Unitized, with box-shaped side and cross members
	Independent suspension—Front:	Torsion bars, trailing arms and stabilizer
	Independent suspension—Rear:	Torsion bars, trailing & diagonal arms
	Service brake	Power assisted. Disc front. Limiting valve rear
	Parking brake	Cable operated, rear
	Rim size	5-1/2 J x 14 steel
	Tire size	185 SR 14 radial ply
	Steering	Roller type
	ELECTRICAL SYSTEM:	Rated voltage
Battery		12V/45 amp./h.
Ignition		Battery
DIMENSIONS:	Wheelbase	94.5 inches
	Track, front	54.6 inches
	Track, rear	56.6 inches
	Length	177.4 inches
	Width	67.7 inches
	Height (unloaded)	77.0 inches
	Ground clearance (loaded)	7.3 inches
WEIGHTS:	Turning circle (approx.)	40.4 feet
	Dry weight	2745 pounds (Delivery van) 2922, (Window Van)
	Payload	2327 pounds (Delivery van) 2150, (Window Van)
PERFORMANCE:	Top Speed	78 mph
	Fuel Consumption (DIN 70030)	25 mpg

OUR 24 MONTH/24,000 MILE WARRANTY*

All you have to do is maintain and service your vehicle in accordance with the Volkswagen Maintenance Schedule. Any factory part found to be defective in material or workmanship within 24 months or 24,000 miles, whichever comes first (except for normal wear and tear and service items), will be repaired or replaced by any Canadian or U.S. Volkswagen Dealer free of charge.

*The terms of this warranty are clearly defined in the owner's manual and will be explained by any authorized Volkswagen dealer.