



There's a small  hotel





.....in every

Here's a family car, made for the kind of adventuring that Northwest families love best! It's rugged, ready to go whenever—and wherever—the weather's great, the fish are biting, the surf is up or the snow is powdery. It takes you over hills and across deserts that would stop a lot of campers in their tracks . . . easy on the driver and on the gasoline. Neither winter's frigid slopes nor summer's burning sands can stay your VW Camper from its appointed path—the engine's air-cooled, mounted in the rear for better traction. The rear axle is double-jointed for safety and stability, the underbody is solid steel. You get solid comfort, too, in a VW camper, with riding room for the whole family and wide, picture windows that make the tour really scenic.





Volkswagen Camper.

Ready for immediate occupancy, in the scenery of your choice! Just turn off the motor, and your VW Camper becomes your own resort hotel, your "room with a view" for all the things you do indoors when you're outdoors. Designed with the features that Northwest families prefer, the VW Camper interior turns a little space into a lot of living room. The well-organized storage places for food, clothing, bedding and equipment leave plenty of "people places" (for standing, sprawling, sitting, and walking around). With the sturdy, free-standing tent attached, there's even more room—and if you want to drive away for the day, your tent will hold your campsite.

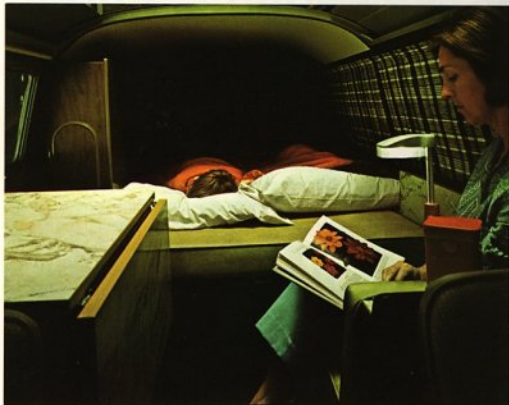


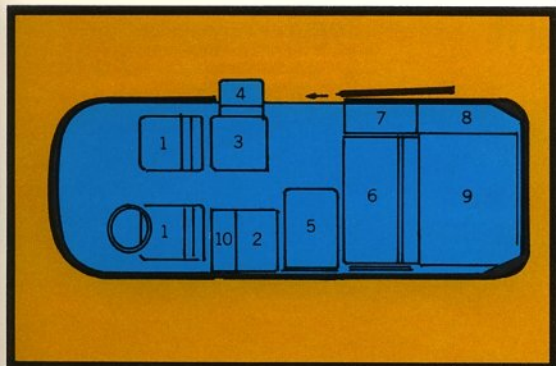
For Traveling,
Eating, Sleeping,
Sitting, Cooking,
Post Card-Writing,
Trophy-Carrying,
Dishwashing,
Hauling,
Laundering,
Bird-Watching,
Gear-Stowing,
Scenery-Viewing,
Reading, Partying,
Fishpole-Fixing,
Cat-Napping,
Clothes-Changing,
Picture-Painting,
Game-Playing,
Storytelling,
Loafing,
First-Aiding,
Refrigerating,
Ski-Waxing,
Film-Changing,
Route-Mapping,
Star-Gazing, Etc.



The interior design of your VW Camper is as handsome and functional as the exterior. Walls and cabinets of woodgrained plastic laminate resist scuffs and scratches and they're Polyfoam insulated to keep out heat or cold. On the floor, tough, wall-to-wall vinyl takes traffic in stride. Color-coordinated curtains add charm and privacy to the three wide-screen windows. Best of all, efficient storage areas help you keep things in *their* place, not yours.

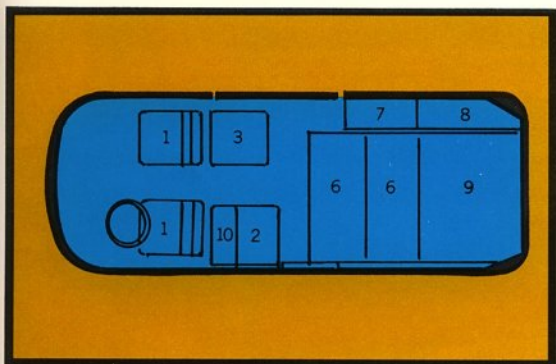
In just ten seconds, the back seat of the VW Camper pulls flat, into a full-size double bed; and a hammock slung over the driver's compartment can accommodate a youngster. With the optional penthouse, two people can also sleep topside. And even with a full complement of sleepers, there's still sitting room for a "night owl." The kitchen-sitting area has icebox, work space, water supply—and a table-for-four that folds away for the night.





By Day

(1) Split front seats. (2) Rear-facing passenger seat with storage underneath. (3) Icebox cabinet with faucet, work surface. (4) Raised utility table. (5) Dinette table. (6) Front-facing passenger seat, with storage underneath. (7) Clothes closet. (8) Linen closet. (9) Rear mattress. (10) Storage cabinet behind rear-facing bench seat.



By Night

Table 4-5) folded away. Front-facing passenger seat (6) pulled out to make 78" double bed with mattress (9).

Standard VW Camper Features

Convertible seat-to-bed with armrest and storage locker.
 Rear deck mattress to complete bed make-up.
 Clothes closet. Linen closet.
 Rear-facing passenger seat with storage below seat and behind seat back.
 Icebox unit: 2.6 cu. ft. capacity box, ice rack, independent drain.
 Water pump and 10-gallon tank with filler cap and drain.
 Work surface with faucet, swing-up work shelf, utility drawer.
 Scratch-and-mar-resistant plastic laminate paneling on all built-ins.
 Wear-resistant flooring. Curtains.
 Naugahyde seat and mattress upholstery.
 Lamp over swing-up table.
 110-volt inlet.
 Front-mounted spare tire.



Optional Equipment

Tent 7' x 8' sturdy nylon with vinyl floor. External aluminum frame for easy set-up. Zippered door, screened windows. Connecting boot to camper. Firmly free-standing.



other VW Camping Ideas



A free-standing tent for Squarebacks!

Adapted for use with the VW Squareback, the large, sturdy tent has all the features of the Camper tent—plus a special boot that makes it a snug “extension” of your car. Easy to carry and set up.



Penthouse Top

Another boon for the big guys . . . the penthouse top gives a 6-footer plenty of headroom . . . and adds two adult-size sleeping spaces to your accommodations.



Pop-up Top

Even a Paul Bunyan can stand tall inside a VW Camper with the optional pop-up top. It gives you a full 6' 4" of standing room, plus extra ventilation through the screened windows.

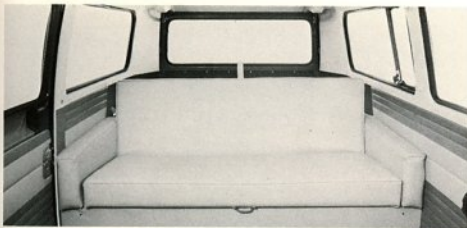
Electric Refrigerator

Hammock

Portable Toilet

Completely self-contained.

Curtains for Driver's Compartment



Back seat that becomes a bed . . . in a VW Deluxe Station Wagon!

Just the thing for happy hunters, long-distance travelers and people who don't need a "full-time" Camper . . . just comfortable sleeping accommodations. By day, the handsome seat-to-bed is a sturdy, Naugahyde-covered "sofa" that seats three for travel; at night, it pulls

down into a wide, soft bed that sleeps two. Center seat (not shown) is easily removed to allow for bed space. Ask your dealer about the driver-compartment hammock and other extras that can add even more camping convenience to your VW station wagon.

Basic Unit Specifications

Bumpers, front and rear
Directional signals
(wrap-around in front)
Padded instrument panel
Non-repeat ignition lock
Side marker reflectors
Four-way safety flashers
Dual padded sun visors
Roll-down windows in cab
Adjustable driver's seat
and backrest
Fresh air heater-defroster
and ventilating system
Spare wheel, tire

Two-speed electric
windshield washers
Interior mirror
Ashtray
Back-up lights
Glovebox with door
Sliding loading
door on side
Cab dome light
Outside rear-view
mirrors
12-volt battery with
early cut-in 360 watt
generator

Specifications:

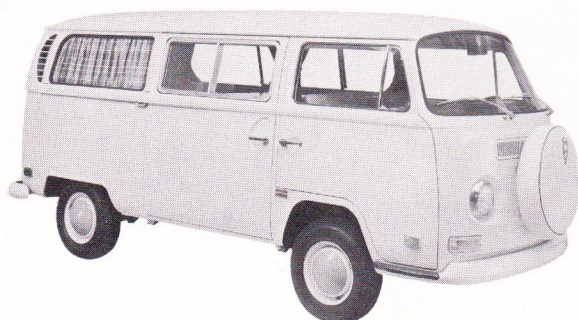
Engine and Transmission: 4-cylinder, 4-stroke (flat four) air-cooled rear engine. Bore/stroke: 3.36/2.72 in. Capacity: 96.66 cu. in. (1584 cc.). Compression ratio: 7.5:1. Output: 60 hp. (SAE) at 4,400 rpm. Maximum torque: 81.7 ft./lb. (SAE) at 3,000 rpm. Oil Cooler. Automatic choke. Automatic pre-heating of carburetor air intake. Exhaust emission control system and positive crankcase ventilation. Fully-synchronized, floor-mounted, four-speed gearbox.

Performance. Fuel consumption: 23 mpg., according to DIN 70030 (consumption plus 10% with half the payload at a steady $\frac{3}{4}$ of top speed on level road). Maximum and cruising speed: 65 mph.

Chassis. Unitized body construction with platform chassis. Independent 4-wheel torsion bar suspension, with additional front torsion stabilizer bar. Telescopic double-acting hydraulic shock absorbers. Ball joints on front axle, double-jointed rear axle controlled by diagonal and trailing arms. Steering: 2.8 turns of wheel from lock to lock. Disc brakes front with dashboard warning light. Lever-action hand brake with pistol grip. Low-profile tubeless tires, 7.00 x 14, 8 ply rating, mounted on 5-inch rims. Track: front/rear—54.6/56.6 in. Road clearance: 7.3 in. Fuel tank capacity: 16 gallons.

Exterior colors: Pastel White, Neptune Blue, Chianti Red.

. Ready to Move in!



Right from the word "go"—whether you're running errands around town, taking the Cub Scouts on an outing or heading for a vacation in the high country—your Volkswagen Camper can make every move a real pleasure. It's tops in engineering, operating economy and ease of handling . . . a second car that becomes your own "motor hotel." May we make a reservation for you?